

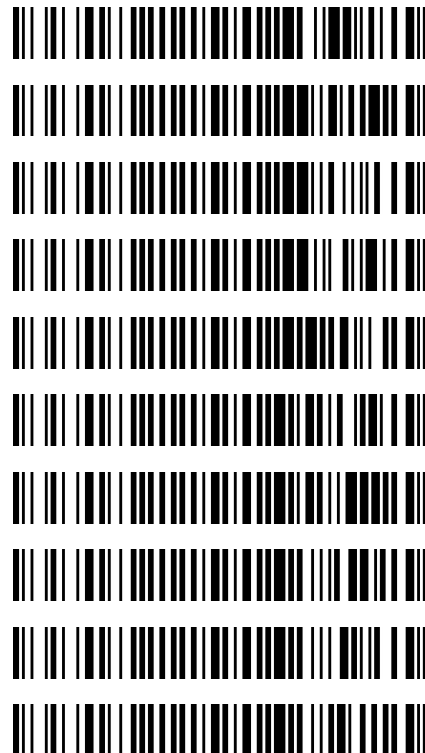


4/25/2024

Worklist: 6790**REVIEWED**

By Britany Wylie at 9:21 am, Apr 26, 2024

<u>LAB_CASE</u>	<u>ITEM</u>	<u>ITEM_TYPE</u>	<u>DESCRIPTION</u>
C2024-0641	1	BCK	AM 28 Blood Multi-Drug Quant Panel 1 by LC-QQQ
C2024-0692	2	BCK	AM 28 Blood Multi-Drug Quant Panel 1 by LC-QQQ
C2024-0693	1	BCK	AM 28 Blood Multi-Drug Quant Panel 1 by LC-QQQ
C2024-0710	1	BCK	AM 28 Blood Multi-Drug Quant Panel 1 by LC-QQQ
C2024-0713	1	BCK	AM 28 Blood Multi-Drug Quant Panel 1 by LC-QQQ
C2024-0715	1	BCK	AM 28 Blood Multi-Drug Quant Panel 1 by LC-QQQ
C2024-0719	1	BCK	AM 28 Blood Multi-Drug Quant Panel 1 by LC-QQQ
C2024-0756	2	BCK	AM 28 Blood Multi-Drug Quant Panel 1 by LC-QQQ
C2024-0758	1	BCK	AM 28 Blood Multi-Drug Quant Panel 1 by LC-QQQ
C2024-0759	1	BCK	AM 28 Blood Multi-Drug Quant Panel 1 by LC-QQQ



AM# 28: Multi-Drug Quantitation by LC-MS/MS

Extraction Date: 04/24/24

Plate lot#: 231215

Mobile phase A: 5mM Amm Form + 0.01% FA

Blank Blood Lot: 24C52042

Column: Agilent 120 EC-C18 (2.1x 100-2.7um)

Analyst: Anne Nord

Plate Retest Date: 06/15/2024

Mobile phase B: 0.01% Formic Acid in MeOH

Blank Urine Lot: blood only run

LCMS-QQQ ID: 69679

Pre-Analytic:

- 1. Check levels of mobile phases and needle wash refill as needed. Ensure waste is not full.
- 2. Ensure correct column is installed and begin mobile phase flow allow to equilibrate ~ 30 minutes.

Analytic:

- 1. Remove standards, plate, controls, and samples from cold storage. Allow to reach room temperature.
- 2. **Urine Hydrolysis: In blank well, add 250µL urine, 40µL BG Turbo, and 100µL Instant Buffer I. Place on plate shaker for 5 minutes.**
- 3. Using a calibrated pipette, pipette **250µL blood and urine** (if applicable) into wells of analytical (standards) plate. **Pipette ID: P31168J**
- 4. Pipette **250µL 0.5 M ammonium hydroxide** in wells of analytical plate.
- 5. Place on shaking incubator at ambient temp., 900rpm for 15 minutes.
- 6. Transfer **200-450µL of blood+base and urine+base (if applicable)** mixture to corresponding wells of SLE+ plate. Amount transferred: 300
- 7. Apply positive pressure for approx. 10-15 seconds (or until no liquid remains on top of sorbent). **(Load at 85-100 PSI- Selector to the right).**
- 8. Wait 5 minutes.
- 9. Add **900uL ethyl acetate.**
- 10. Wait 5 minutes.
- 11. Apply positive pressure for approx. 15 seconds. **(10-15 PSI- Selector to the left).**
- 12. Add **900uL ethyl acetate.**
- 13. Wait 5 minutes.
- 14. Apply positive pressure for approx. 15 seconds. **(10-15 PSI- Selector to the left).**
- 15. Remove plate containing eluate. Place on SPE Dry and evaporate to dryness at approx. 35°C. **If run contains urine or at the analyst's discretion, add 50µL 1% HCl in MeOH to wells and place plate cover on plate before drying (optional).**
- 16. Reconstitute in **100µL 20% LC MeOH** and heat seal plate with foil. Place in autosampler and run worklist.

Post-Analytic

- 1. Create batch and process data.
- 2. Make necessary changes to integration limits
- 3. Integration linear and R² values ≥0.98 for each analyte.
- 4. For unknown samples and controls: response ratio within 20% of average of controls and standards, RT within +/- 5% (tramadol RT +/-2%), S/N for primary transition >10 and secondary transitions >5.
- 5. Did all QCs pass for each analyte? Yes, see comments Add Control data to QC tracking spreadsheet.
- 6. Central File Packet to include: LIMS Worklist, Method Checklist, Calibration and Control Reports.

COMMENTS: *Compounds evaluated*

7-aminonclonazepam	5-100 dropped cal 6, 7, 8 due to accuracy qualitative only
amphetamine	5-50 dropped cal 5, 6, 7, 8 due to accuracy qualitative only
bromazolam	
buprenorphine	
carisoprodol	
citalopram	
clonazepam	5-500 dropped cal 8 due to accuracy (qualitative 10 and less)
dextromethorphan	

diphenhydramine	
doxylamine	
EDDP	
fentanyl	
fluorofentanyl	
fluoxetine	
hydrocodone	
ketamine	5-250 dropped cal 7, 8 due to accuracy
lamotrigine	
meprobamate	
methadone	
methamphetamine	5-250 dropped cal 7, 8 due to accuracy
morphine	
norbuprenorphine	2.5-100 dropped cal 1 and 2 due to linearity
norfentanyl	
o-desmethylvenlafaxine	
trazodone	5-100 dropped cal 6,7,8 due to accuracy qualitative only
venlafaxine	

The system shut down due to a leak while running the controls that follow the calibrators. The sample loop was changed, and it was observed the waste line was backing up due to its placement. The waste line was cleared and put in a better position. The run was resumed. After a couple more controls ran, I started processing the data. The calibration standards that were run before the shut down had varying retention times and the pressure curves were not stable. I stopped the run and re-ran the samples that were run before the shutdown occurred. The re-injections were used for evaluation. The negative blood control did not have time to equilibrate when the run was restarted and the retention times for some of the internal standards were out of range. It was reinjected the next morning 4/25/24 along with a blood qc.

	1	2	3	4	5	6	7	8	9	10	11	12
A				0692-2	IS + Cal. 1	IS + QC_1	0715-1					
B				0641-1	IS + Cal. 2	IS + QC_2						
C				0693-1	IS + Cal. 3	IS + QC 3						
D				0710-1	IS + Cal. 4	IS + QC_4						
E				0713-1	IS + Cal. 5							
F				0719-1	IS + Cal. 6	negative blood						
G				0756-2	IS + Cal. 7	0758-1						
H					IS + Cal. 8	0759-1						

blank in front

plate position 2

c2024-____-__

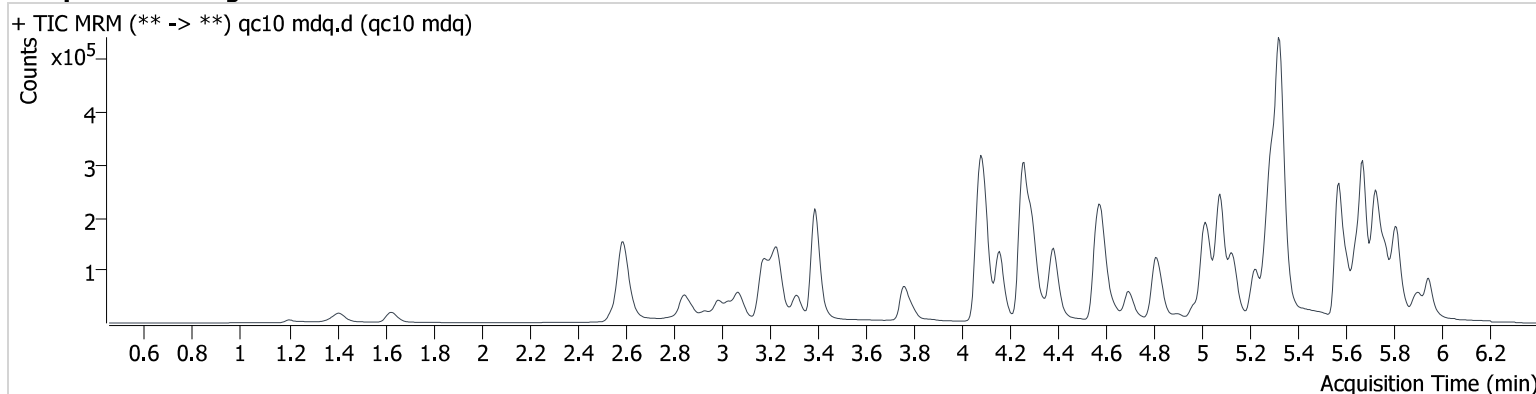
AM #28 Multi-Drug Quant. Results

Batch results D:\MassHunter\Data\2024\am 27-28\042424\QuantResults\am 28.batch.bin
Calibration Last Update 4/25/2024 11:02:08 AM

Instrument 69679
Type QC
Acq. Method mdqp1 121523.m
Sample Position P2-A6
Injection Volume 2
Acq. Date-Time 4/24/2024 12:50:50 PM
Sample Info.

Data File qc10 mdq.d
Sample qc10 mdq
Operator Anne Nord
Comment Only drugs and concentrations listed on the laboratory report itself are appropriate to be used for interpretation purposes. Any drugs or values in the notes but not included on the report are used by laboratory personnel to make determinations/reach conclusions within the confines of the methods.

Sample Chromatogram



Name	RT	Resp.	S/N	Ratio	S/N	ISTD Resp.	Final Conc.
7-aminoclonazepam	4.268	3799	1136.5	130.98	1185.2	38327	8.699 ng/ml
Amphetamine	3.069	27330	553.8	263.59	2210.5	101807	22.789 ng/ml
Bromazolam	5.814	15610	307.3	93.58	334.0	61168	10.017 ng/ml
Buprenorphine	5.942	3955	193.4	16.36	64.3	57940	0.932 ng/ml
Carisoprodol	5.719	25022	75635.7	64.18	2573.7	91581	10.330 ng/ml
Citalopram	5.272	53681	4547.4	33.94	∞	248146	9.229 ng/ml
Clonazepam	5.612	5538	5989.0	40.48	4340.4	11572	7.662 ng/ml
Dextromethorphan	5.305	35204	12207.7	76.46	4841.0	201451	9.090 ng/ml
Diphenhydramine	5.327	53656	2180.3	293.51	18213.3	864404	8.643 ng/ml
Doxylamine	4.586	158287	33397.4	94.35	18264.3	479858	10.035 ng/ml
EDDP	5.294	54575	1688.1	45.39	620992.2	291460	9.180 ng/ml
Fentanyl	5.142	6478	691.8	139.57	821.8	284709	0.961 ng/ml
Fluorofentanyl	5.203	5686	6561.2	118.24	196.4	3938	0.891 ng/ml
Fluoxetine	5.727	70496	3232.3	6.60	∞	266518	10.106 ng/ml
Hydrocodone	3.065	15058	3033.3	40.52	∞	85299	11.606 ng/ml
Ketamine	4.082	41355	5882.2	37.85	1537.6	193093	9.874 ng/ml
Lamotrigine	4.341	3942	1051.6	101.84	5420.7	91581	10.061 ng/ml
Meprobamate	4.919	5345	1173.1	48.21	260.2	19097	10.998 ng/ml
Methadone	5.675	79315	5690.8	61.69	11119.5	429641	9.316 ng/ml
Methamphetamine	3.237	124367	6986.2	36.37	1999.0	283444	10.384 ng/ml
Morphine	1.206	2321	162.9	21.72	169.9	3556	9.298 ng/ml
Norbuprenorphine	5.033	629	1316.3	109.07	987.2	8796	0.181 ng/ml
Norfentanyl	4.108	3558	531.9	31.59	∞	425806	1.003 ng/ml
O-Desmethylvenlafaxine	4.101	33382	176.8	535.63	4046.2	11298	10.157 ng/ml
Trazodone	5.286	48586	2284.2	133.83	823406.2	281209	10.186 ng/ml
Venlafaxine	5.076	84130	9887.4	36.47	1326.6	501698	8.901 ng/ml

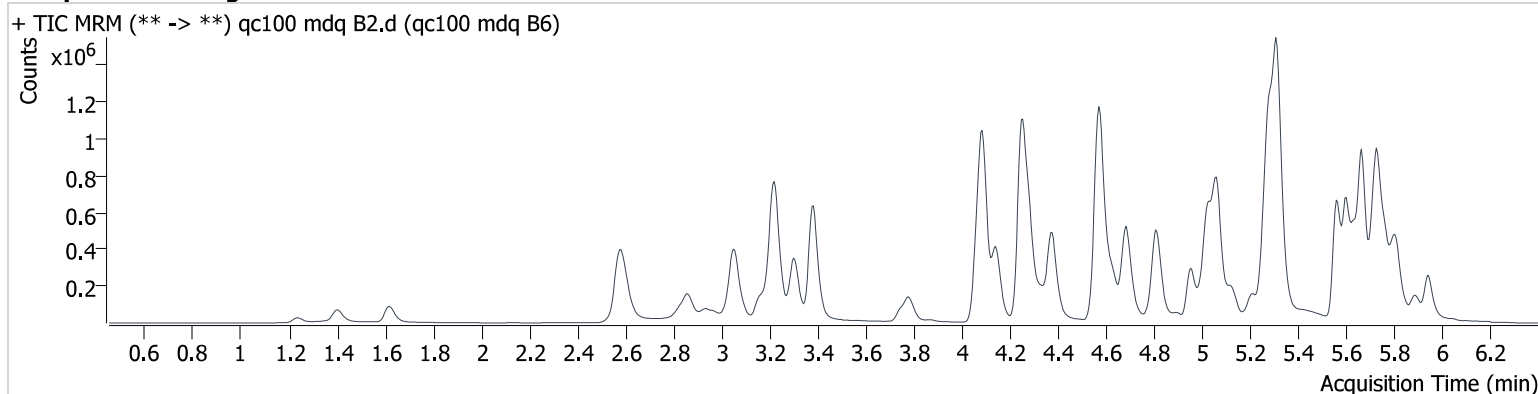
AM #28 Multi-Drug Quant. Results

Batch results D:\MassHunter\Data\2024\am 27-28\042424\QuantResults\am 28.batch.bin
Calibration Last Update 4/25/2024 11:02:08 AM

Instrument 69679
Type QC
Acq. Method mdqp1 121523.m
Sample Position P2-B6
Injection Volume 2
Acq. Date-Time 4/24/2024 6:23:32 PM
Sample Info.

Data File qc100 mdq B2.d
Sample qc100 mdq B6
Operator Anne Nord
Comment Only drugs and concentrations listed on the laboratory report itself are appropriate to be used for interpretation purposes. Any drugs or values in the notes but not included on the report are used by laboratory personnel to make determinations/reach conclusions within the confines of the methods.

Sample Chromatogram



Name	RT	Resp.	S/N	Ratio	S/N	ISTD Resp.	Final Conc.
7-aminoclonazepam	4.258	34740	3743.1	121.17	2264.6	39444	84.868 ng/ml
Amphetamine	3.058	252824	4066.6	273.57	32123.5	103680	218.121 ng/ml
Bromazolam	5.804	112853	1240.4	96.84	3164.2	48258	95.159 ng/ml
Buprenorphine	5.947	41897	1651.9	14.85	597.6	59997	10.691 ng/ml
Carisoprodol	5.714	196466	∞	62.53	10375.1	76091	103.630 ng/ml
Citalopram	5.256	490969	169683.7	39.52	∞	226547	93.404 ng/ml
Clonazepam	5.607	51732	∞	35.17	23683.7	9712	92.954 ng/ml
Dextromethorphan	5.295	324595	539360.1	76.74	∞	179457	92.721 ng/ml
Diphenhydramine	5.316	522941	21522.3	304.07	459890.3	837964	85.365 ng/ml
Doxylamine	4.571	1656089	120716027.4	95.32	∞	509069	102.725 ng/ml
EDDP	5.284	558743	100558.1	45.33	∞	288554	94.652 ng/ml
Fentanyl	5.132	69125	10133.3	131.93	5945.8	299476	9.490 ng/ml
Fluorofentanyl	5.193	59287	22541.5	121.47	13850.9	3985	8.809 ng/ml
Fluoxetine	5.722	596702	∞	6.32	182029.1	233807	100.086 ng/ml
Hydrocodone	3.050	187267	∞	36.00	∞	104116	110.896 ng/ml
Ketamine	4.072	359597	60006.1	38.74	60491.5	179604	99.406 ng/ml
Lamotrigine	4.321	33662	∞	97.89	468405.0	76091	102.430 ng/ml
Meprobamate	4.903	48493	12027.9	52.29	916.9	19511	99.606 ng/ml
Methadone	5.664	829474	12437979.9	66.13	200444.7	424902	93.776 ng/ml
Methamphetamine	3.227	967958	∞	35.73	441385.4	299758	101.370 ng/ml
Morphine	1.236	27995	2774.0	18.55	615.9	3895	103.847 ng/ml
Norbuprenorphine	5.022	4875	4566.6	102.29	13008.0	8622	10.257 ng/ml
Norfentanyl	4.093	30464	2146.5	29.22	59340.2	355146	9.923 ng/ml
O-Desmethylvenlafaxine	4.086	303167	2324.3	544.71	128420.7	10832	98.598 ng/ml
Trazodone	5.276	458685	47022.7	137.98	47400.7	322012	88.348 ng/ml
Venlafaxine	5.066	893041	∞	36.40	31048.7	476772	92.468 ng/ml

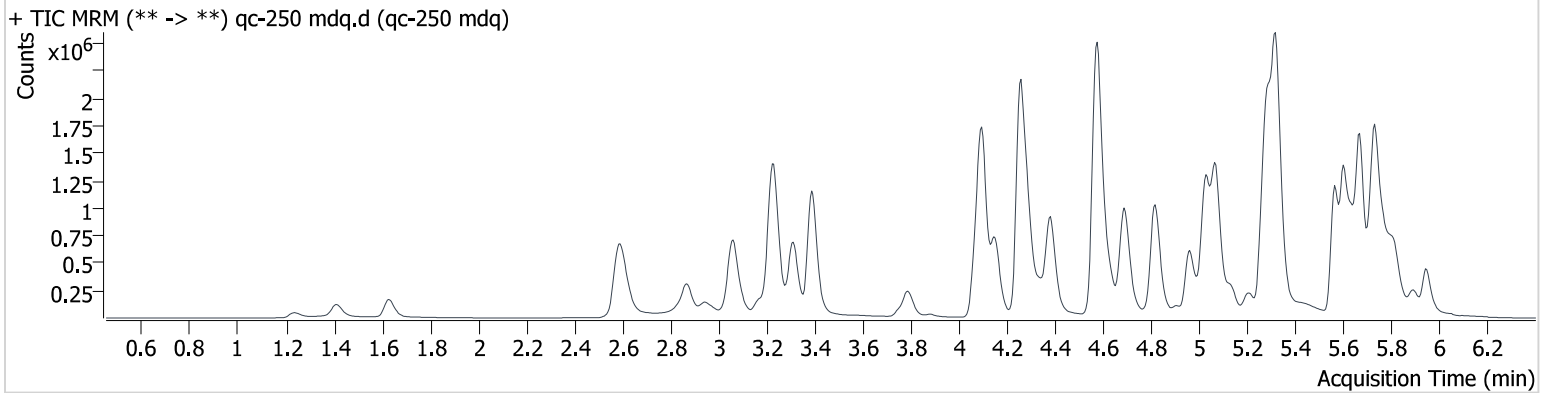
AM #28 Multi-Drug Quant. Results

Batch results D:\MassHunter\Data\2024\am 27-28\042424\QuantResults\am 28.batch.bin
Calibration Last Update 4/25/2024 11:02:08 AM

Instrument 69679
Type QC
Acq. Method mdqp1 121523.m
Sample Position P2-C6
Injection Volume 2
Acq. Date-Time 4/24/2024 12:59:42 PM
Sample Info.

Data File qc-250 mdq.d
Sample qc-250 mdq
Operator Anne Nord
Comment Only drugs and concentrations listed on the laboratory report itself are appropriate to be used for interpretation purposes. Any drugs or values in the notes but not included on the report are used by laboratory personnel to make determinations/reach conclusions within the confines of the methods.

Sample Chromatogram



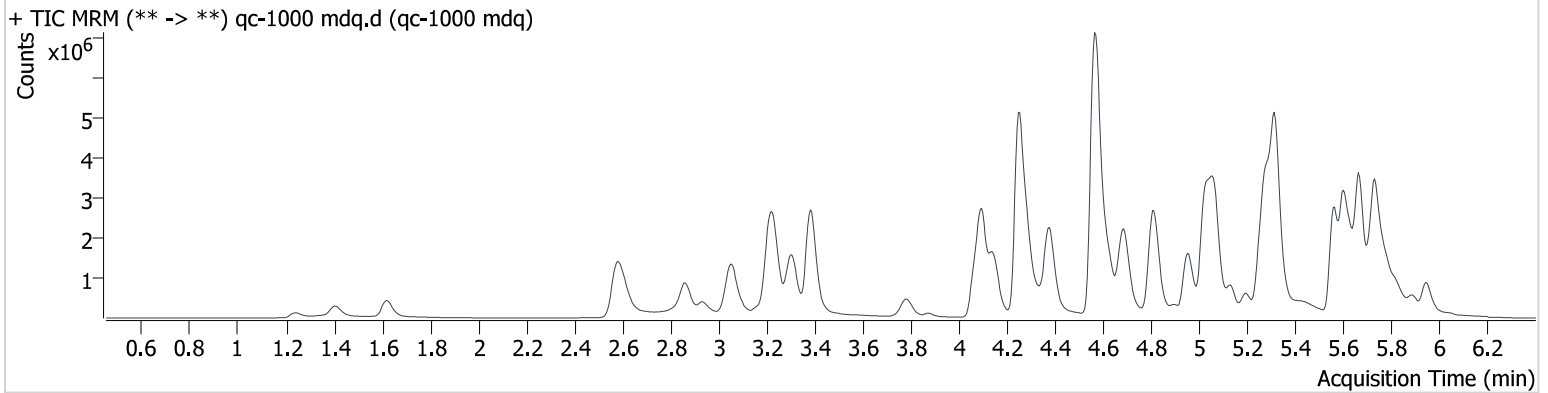
Name	RT	Resp.	S/N	Ratio	S/N	ISTD Resp.	Final Conc.
7-aminoclonazepam	4.263	57688	4428.8	116.69	1988.5	28416	196.879 ng/ml
Amphetamine	3.064	479532	16140.9	255.65	1502.8	94416	455.791 ng/ml
Bromazolam	5.809	200511	∞	93.41	1262.9	35829	228.298 ng/ml
Buprenorphine	5.942	90241	3561.4	15.13	1580.7	55888	24.886 ng/ml
Carisoprodol	5.714	349576	4504829.2	62.57	91920.9	59496	236.731 ng/ml
Citalopram	5.261	969235	∞	39.62	968284.9	177574	235.402 ng/ml
Clonazepam	5.612	96001	451769.3	32.00	56106.0	6864	245.305 ng/ml
Dextromethorphan	5.300	647475	90763.2	75.78	93845.5	141355	234.582 ng/ml
Diphenhydramine	5.327	1101371	755828.6	295.35	238190.9	724747	207.631 ng/ml
Doxylamine	4.576	3779371	551433.4	95.74	256030.9	483393	247.475 ng/ml
EDDP	5.289	1180451	90614.8	44.52	2872885.8	253699	227.403 ng/ml
Fentanyl	5.137	165993	32696.3	132.87	34879.5	284880	23.914 ng/ml
Fluorofentanyl	5.198	144810	178846.5	122.29	17931.8	3968	21.551 ng/ml
Fluoxetine	5.722	1147181	∞	6.76	∞	194142	232.124 ng/ml
Hydrocodone	3.055	401735	∞	40.95	∞	93068	265.020 ng/ml
Ketamine	4.077	680019	89700.4	39.06	43041.2	159451	212.703 ng/ml
Lamotrigine	4.331	62957	10467.2	99.31	298834.3	59496	244.864 ng/ml
Meprobamate	4.913	114691	14549.9	50.14	12604.8	19112	240.836 ng/ml
Methadone	5.670	1873247	∞	60.76	201827.3	382086	234.762 ng/ml
Methamphetamine	3.232	1888174	400616.4	37.85	20581.8	285468	211.752 ng/ml
Morphine	1.236	59928	5380.3	17.58	1540.8	3399	254.952 ng/ml
Norbuprenorphine	5.027	10051	23441.1	98.38	8978.6	7363	26.564 ng/ml
Norfentanyl	4.103	52989	5221.7	29.05	∞	254421	24.035 ng/ml
O-Desmethylvenlafaxine	4.096	596151	1817.3	538.67	∞	8283	253.984 ng/ml
Trazodone	5.276	878680	∞	135.85	∞	306818	178.235 ng/ml
Venlafaxine	5.071	2033111	983796.1	35.83	56373.2	430760	231.960 ng/ml

AM #28 Multi-Drug Quant. Results

Batch results D:\MassHunter\Data\2024\am 27-28\042424\QuantResults\am 28.batch.bin
Calibration Last Update 4/25/2024 11:02:08 AM

Instrument	69679	Data File	qc-1000 mdq.d
Type	QC	Sample	qc-1000 mdq
Acq. Method	mdqp1 121523.m	Operator	Anne Nord
Sample Position	P2-D6	Comment	Only drugs and concentrations listed on the laboratory report itself are appropriate to be used for interpretation purposes. Any drugs or values in the notes but not included on the report are used by laboratory personnel to make determinations/reach conclusions within the confines of the methods.
Injection Volume	2		
Acq. Date-Time	4/24/2024 3:04:24 PM		
Sample Info.			

Sample Chromatogram



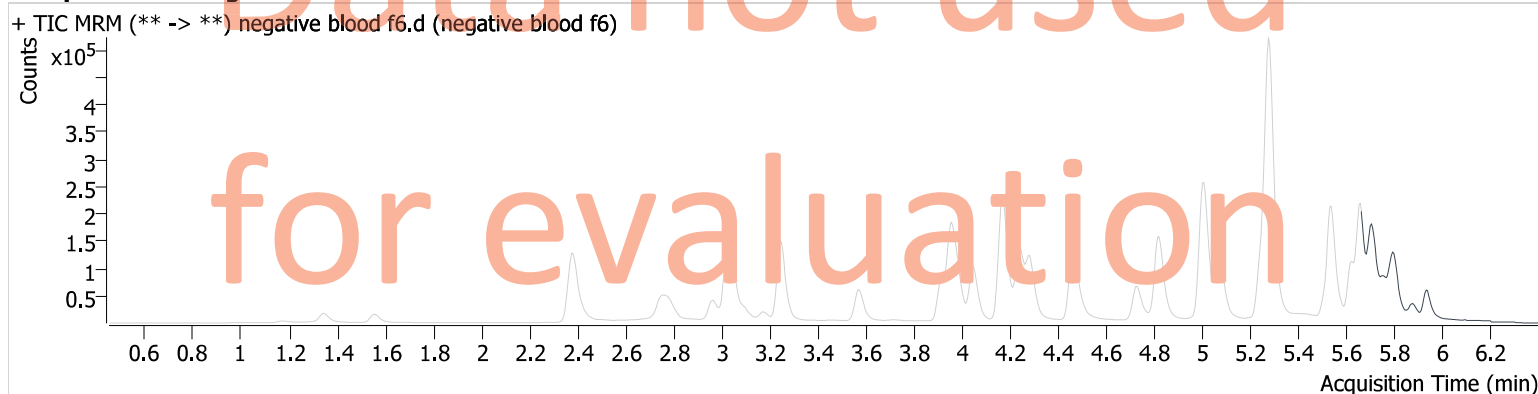
Name	RT	Resp.	S/N	Ratio	S/N	ISTD Resp.	Final Conc.
7-aminoclonazepam	4.263	120547	5156.5	112.68	7249.4	15146	774.662 ng/ml
Amphetamine	3.058	929539	26156.4	256.86	307399.5	80244	1041.320 ng/ml
Bromazolam	5.804	350637	10727.1	87.76	∞	15792	907.020 ng/ml
Buprenorphine	5.952	280646	5094.2	15.50	1540.1	52290	83.014 ng/ml
Carisoprodol	5.709	587625	3096621.8	62.34	∞	28247	839.972 ng/ml
Citalopram	5.251	2108083	251448.3	41.19	∞	106730	852.125 ng/ml
Clonazepam	5.612	150610	87537.7	33.43	∞	2817	939.842 ng/ml
Dextromethorphan	5.295	1223757	170646.4	75.57	212286.8	71641	874.420 ng/ml
Diphenhydramine	5.321	2345660	94954.5	330.72	258740.0	396489	807.823 ng/ml
Doxylamine	4.566	11554238	825586.5	96.50	1798246.3	416383	879.418 ng/ml
EDDP	5.284	3483079	∞	42.82	37097.1	181142	939.655 ng/ml
Fentanyl	5.132	619408	89730.4	140.13	85508.7	265540	95.648 ng/ml
Fluorofentanyl	5.193	569250	293553.6	113.34	3843.7	3825	87.768 ng/ml
Fluoxetine	5.717	2092436	∞	6.78	266110.0	96509	852.507 ng/ml
Hydrocodone	3.045	1219498	∞	40.30	∞	78866	947.295 ng/ml
Ketamine	4.062	1177000	178413.2	39.06	∞	100492	585.634 ng/ml
Lamotrigine	4.316	119673	92184.3	95.47	∞	28247	980.055 ng/ml
Meprobamate	4.903	350910	311615.2	47.40	28287.8	16883	834.771 ng/ml
Methadone	5.670	4955587	243193.7	58.27	868084.4	243233	974.022 ng/ml
Methamphetamine	3.227	4505043	498298.0	39.47	∞	272002	536.138 ng/ml
Morphine	1.241	167344	17593.1	19.20	4029.8	2611	927.009 ng/ml
Norbuprenorphine	5.012	20905	25906.1	101.54	73514.8	4816	87.268 ng/ml
Norfentanyl	4.103	82749	13062.9	28.47	18474.3	93293	102.225 ng/ml
O-Desmethylvenlafaxine	4.096	1067175	3293.2	542.15	82925.1	3837	982.298 ng/ml
Trazodone	5.271	1392874	∞	115.64	165208.7	305874	283.763 ng/ml
Venlafaxine	5.066	5375542	308007.1	35.54	36383.7	260926	1010.192 ng/ml

AM #28 Multi-Drug Quant. Results

Batch results D:\MassHunter\Data\2024\am 27-28\042424\QuantResults\am 28.batch.bin
Calibration Last Update 4/25/2024 11:02:08 AM

Instrument	69679	Data File	negative blood f6.d
Type	Sample	Sample	negative blood f6
Acq. Method	mdqp1 121523.m	Operator	Anne Nord
Sample Position	P2-F6	Comment	Only drugs and concentrations listed on the laboratory report itself are appropriate to be used for interpretation purposes. Any drugs or values in the notes but not included on the report are used by laboratory personnel to make determinations/reach conclusions within the confines of the methods.
Injection Volume	2		
Acq. Date-Time	4/24/2024 3:47:01 PM		
Sample Info.			

Sample Chromatogram



Sample was injected be for instrument was fully equilibrated, there were shifts for some of the internal standards. This sample was re-injected that sample will be evaluated.

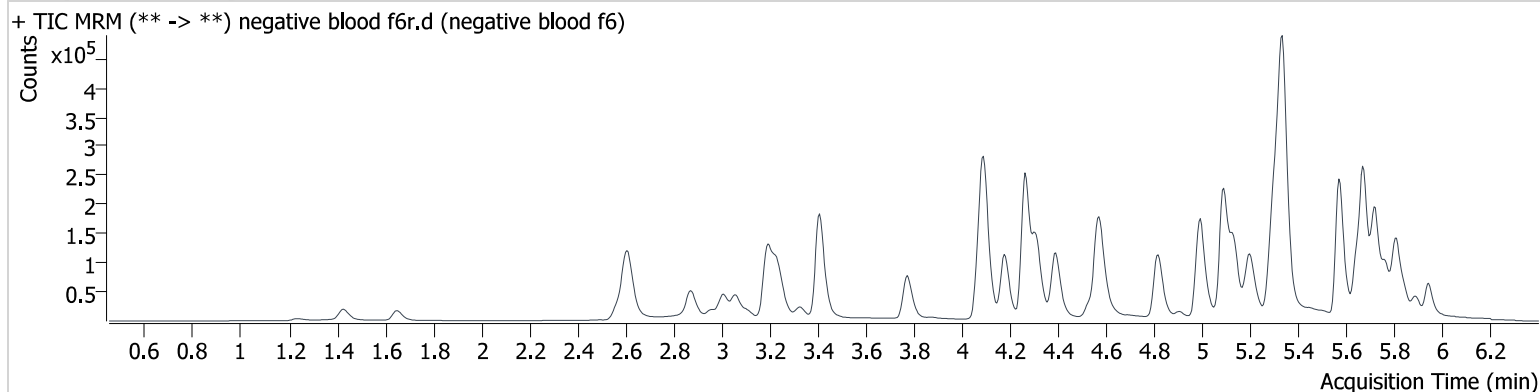
AM #28 Multi-Drug Quant. Results

Batch results D:\MassHunter\Data\2024\am 27-28\042424\QuantResults\am 28.batch.bin
Calibration Last Update 4/25/2024 11:02:08 AM

Instrument 69679
Type Sample
Acq. Method mdqp1 121523.m
Sample Position P2-F6
Injection Volume 2
Acq. Date-Time 4/25/2024 9:32:15 AM
Sample Info.

Data File negative blood f6r.d
Sample negative blood f6
Operator Anne Nord
Comment Only drugs and concentrations listed on the laboratory report itself are appropriate to be used for interpretation purposes. Any drugs or values in the notes but not included on the report are used by laboratory personnel to make determinations/reach conclusions within the confines of the methods.

Sample Chromatogram



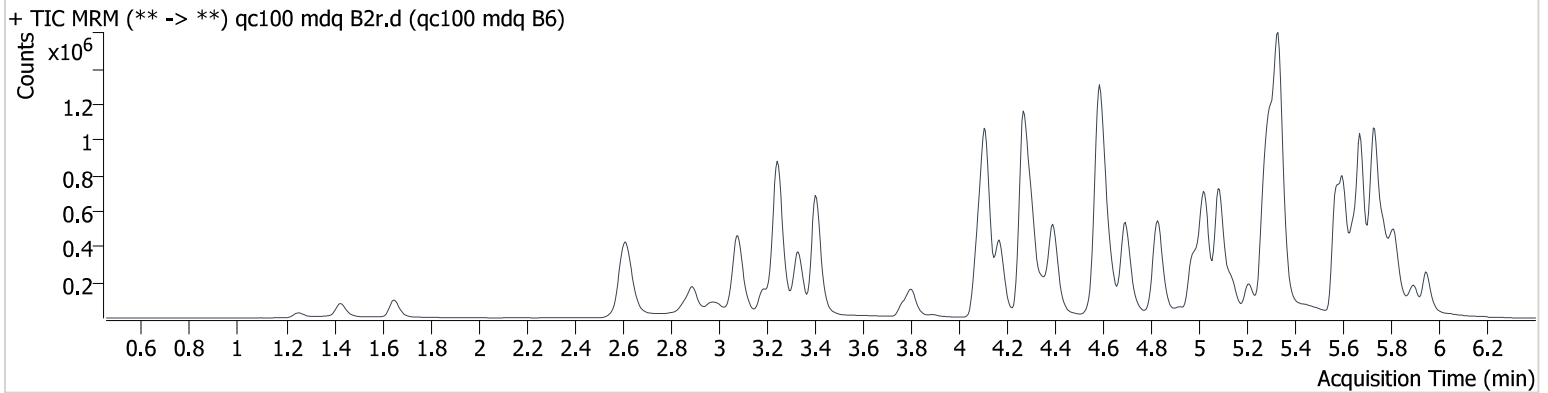
AM #28 Multi-Drug Quant. Results

Batch results D:\MassHunter\Data\2024\am 27-28\042424\QuantResults\am 28.batch.bin
Calibration Last Update 4/25/2024 11:02:08 AM

Instrument 69679
Type QC
Acq. Method mdqp1 121523.m
Sample Position P2-B6
Injection Volume 2
Acq. Date-Time 4/25/2024 9:41:06 AM
Sample Info.

Data File qc100 mdq B2r.d
Sample qc100 mdq B6
Operator Anne Nord
Comment Only drugs and concentrations listed on the laboratory report itself are appropriate to be used for interpretation purposes. Any drugs or values in the notes but not included on the report are used by laboratory personnel to make determinations/reach conclusions within the confines of the methods.

Sample Chromatogram

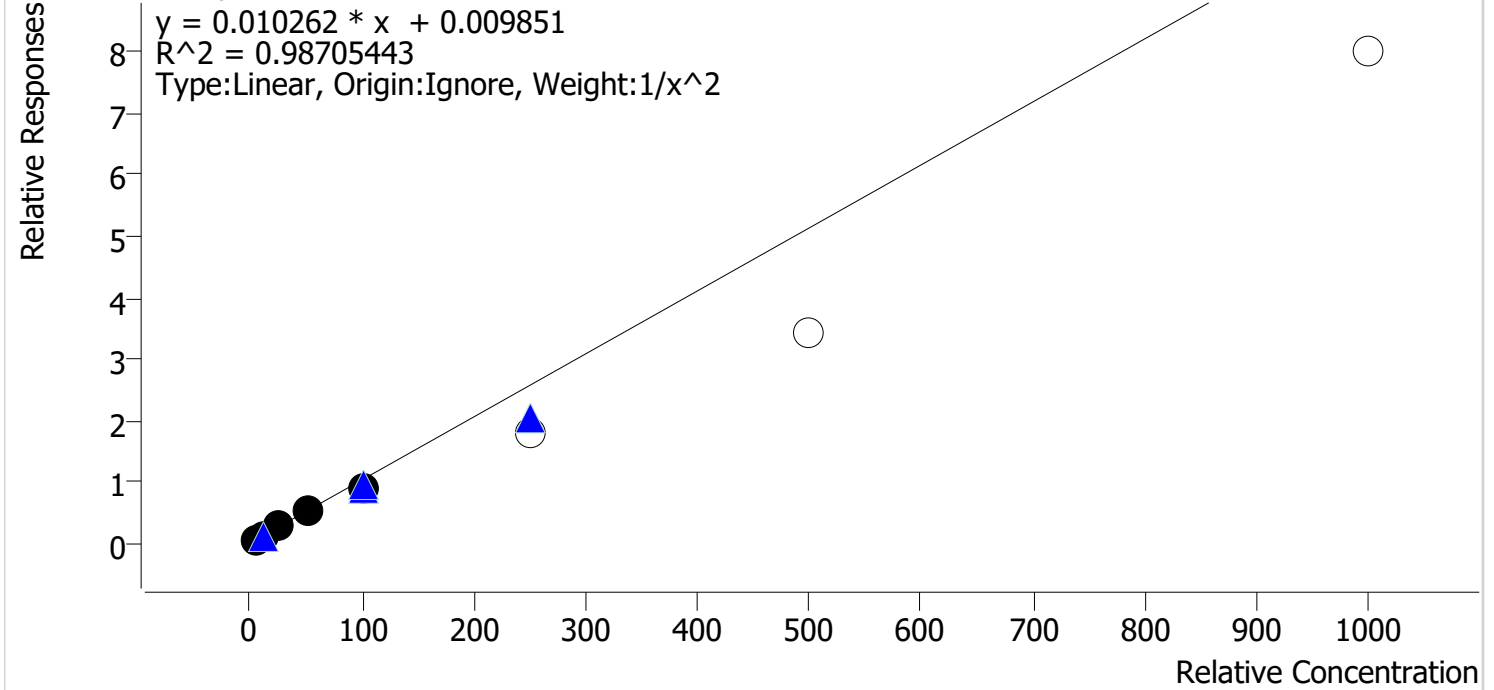


Name	RT	Resp.	S/N	Ratio	S/N	ISTD Resp.	Final Conc.
7-aminoclonazepam	4.278	36897	47202.5	115.59	626921.7	38485	92.468 ng/ml
Amphetamine	3.084	302735	21582.5	258.87	29698.4	119141	227.345 ng/ml
Bromazolam	5.809	121804	∞	94.31	∞	49392	100.370 ng/ml
Buprenorphine	5.901	46629	3228.8	15.03	611.1	67012	10.653 ng/ml
Carisoprodol	5.719	215444	∞	63.79	3107.4	82455	104.879 ng/ml
Citalopram	5.282	509344	21925.5	40.11	729414.8	231836	94.690 ng/ml
Clonazepam	5.617	59733	176957.6	32.61	21885.1	10798	96.563 ng/ml
Dextromethorphan	5.311	361917	1199051.1	74.11	144033139.4	196065	94.622 ng/ml
Diphenhydramine	5.337	571822	167737.4	308.19	418220.6	887480	88.131 ng/ml
Doxylamine	4.586	1824494	1894901.0	93.57	490344.4	551946	104.386 ng/ml
EDDP	5.299	620818	∞	42.55	658494.8	318375	95.317 ng/ml
Fentanyl	5.147	74959	9165.7	135.67	16161.7	316145	9.748 ng/ml
Fluorofentanyl	5.203	64133	541.3	121.14	871.1	4116	9.224 ng/ml
Fluoxetine	5.727	600047	1181487.1	6.68	113129.8	233769	100.666 ng/ml
Hydrocodone	3.076	208265	∞	40.75	2924.5	112090	114.530 ng/ml
Ketamine	4.087	406076	92114.6	38.19	12240.1	206552	97.593 ng/ml
Lamotrigine	4.351	38042	20070.3	101.85	∞	82455	106.820 ng/ml
Meprobamate	4.929	58539	6417.7	49.22	4859.2	22199	105.693 ng/ml
Methadone	5.675	918794	332165.9	65.71	798269.2	466896	94.527 ng/ml
Methamphetamine	3.252	1080549	306543.5	36.64	453604.2	340948	99.418 ng/ml
Morphine	1.252	30066	3197.3	17.70	1457.9	4381	99.138 ng/ml
Norbuprenorphine	5.043	5761	9075.3	98.14	14080.0	9755	10.769 ng/ml
Norfentanyl	4.113	33210	7682.5	30.19	172806.8	388994	9.876 ng/ml
O-Desmethylvenlafaxine	4.111	345340	3981.3	538.45	143829.1	12207	99.662 ng/ml
Trazodone	5.265	539437	85992.3	139.65	97035.1	350789	95.426 ng/ml
Venlafaxine	5.087	967561	171235.0	36.17	5985.5	568280	84.114 ng/ml

Compound Calibration Report

Batch results	D:\MassHunter\Data\2024\lam 27-28\042424\QuantResults\lam 28.batch.bin		
Last Cal. Update	4/25/2024 11:02 AM		
Analyst Name	ISP\datastor		
Analyte	7-aminoclonazepam	Internal Standard	7-Aminoclonazepam-D4

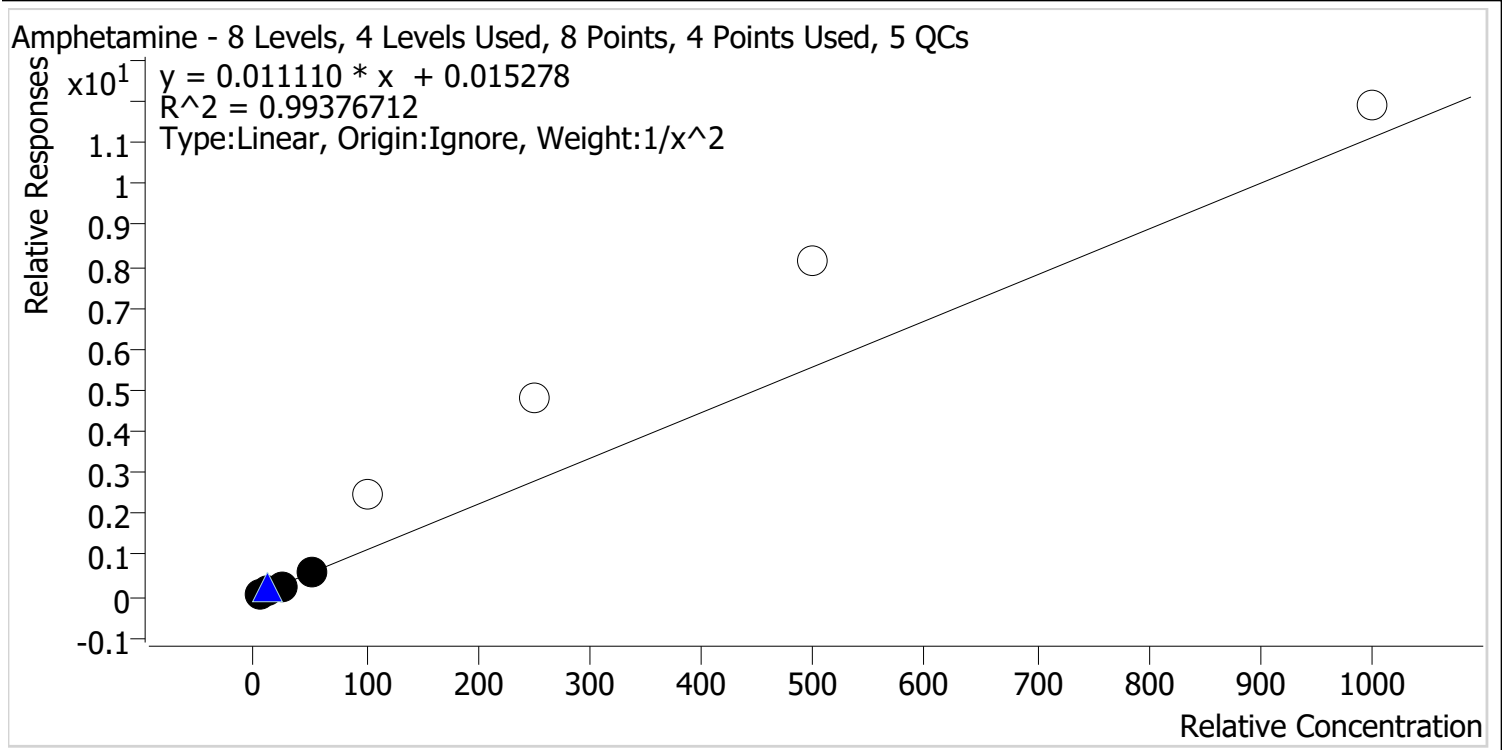
7-aminoclonazepam - 8 Levels, 5 Levels Used, 8 Points, 5 Points Used, 5 QCs



Sample	Level	Enabled	Expected Concentration	Final Concentration	Accuracy
cal 1 mdqr	1	✓	5.0	4.8	96.4
cal 2 mdqr	2	✓	10.0	10.4	104.4
cal 3 mdqr	3	✓	25.0	27.0	107.9
cal 4 mdqr	4	✓	50.0	52.6	105.2
cal 5 mdqr	5	✓	100.0	86.2	86.2
cal 6 mdqr	6	✗	250.0	176.3	70.5
cal 7 mdqr	7	✗	500.0	335.4	67.1
cal 8 mdqr	8	✗	1000.0	779.9	78.0

Compound Calibration Report

Batch results D:\MassHunter\Data\2024\lam 27-28\042424\QuantResults\lam 28.batch.bin
Last Cal. Update 4/25/2024 11:02 AM
Analyst Name ISP\datastor
Analyte Amphetamine **Internal Standard** Amphetamine-D11



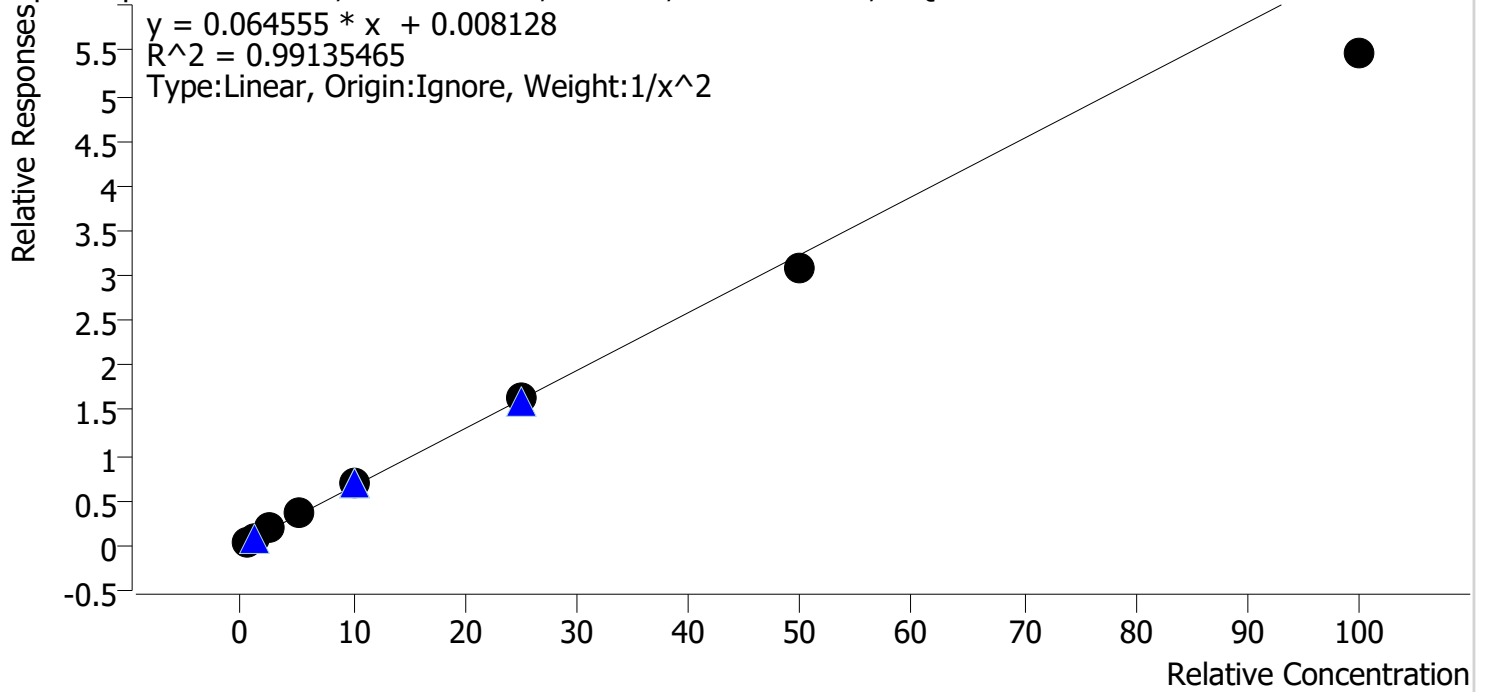
Sample	Level	Enabled	Expected Concentration	Final Concentration	Accuracy
cal 1 mdqr	1	✓	5.0	4.9	97.3
cal 2 mdqr	2	✓	10.0	10.7	107.4
cal 3 mdqr	3	✓	25.0	23.6	94.4
cal 4 mdqr	4	✓	50.0	50.4	100.9
cal 5 mdqr	5	✗	100.0	218.4	218.4
cal 6 mdqr	6	✗	250.0	433.5	173.4
cal 7 mdqr	7	✗	500.0	729.2	145.8
cal 8 mdqr	8	✗	1000.0	1069.6	107.0

Compound Calibration Report

Batch results D:\MassHunter\Data\2024\lam 27-28\042424\QuantResults\lam 28.batch.bin
Last Cal. Update 4/25/2024 11:02 AM
Analyst Name ISP\datastor
Analyte Buprenorphine

Internal Standard Buprenorphine-D4

Buprenorphine - 8 Levels, 8 Levels Used, 8 Points, 8 Points Used, 5 QCs



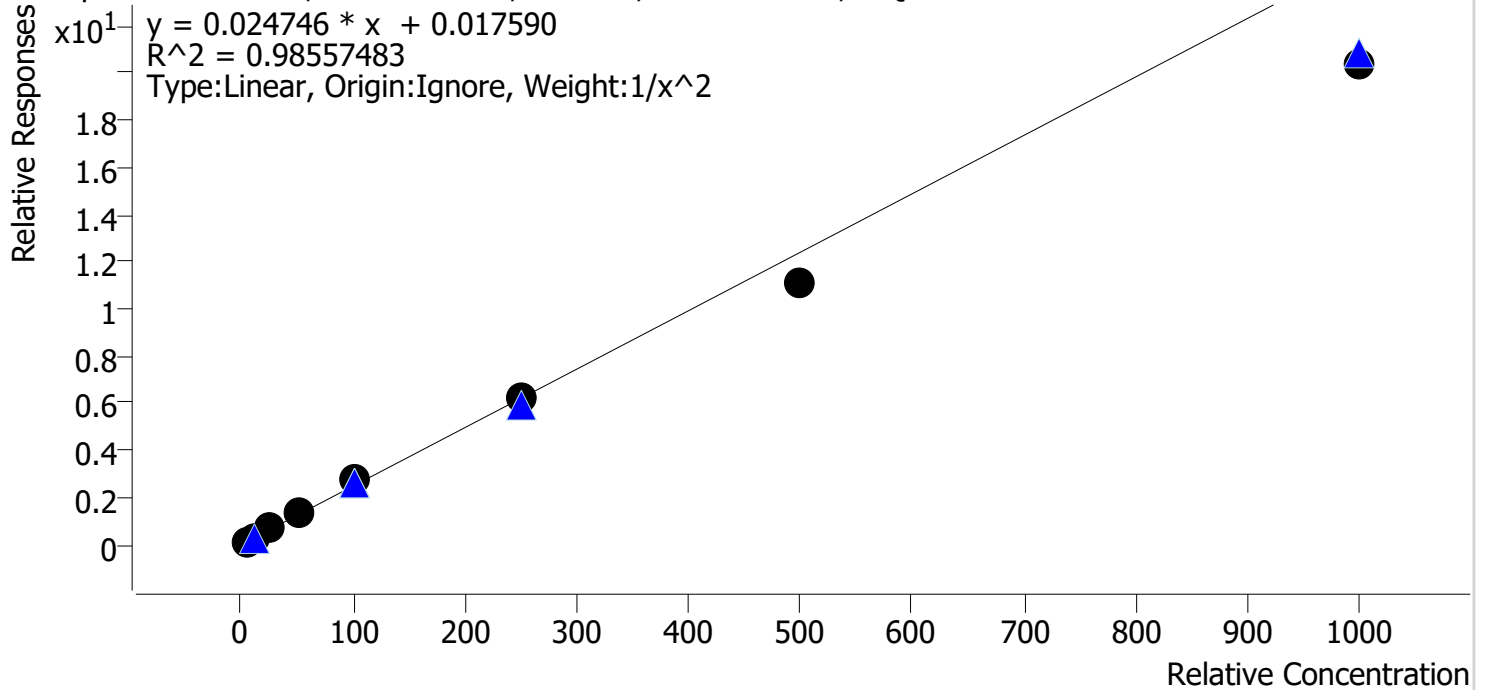
Sample	Level	Enabled	Expected Concentration	Final Concentration	Accuracy
cal 1 mdqr	1	✓	0.5	0.5	98.9
cal 2 mdqr	2	✓	1.0	1.0	96.8
cal 3 mdqr	3	✓	2.5	2.7	107.8
cal 4 mdqr	4	✓	5.0	5.4	108.2
cal 5 mdqr	5	✓	10.0	10.8	107.7
cal 6 mdqr	6	✓	25.0	25.2	100.8
cal 7 mdqr	7	✓	50.0	47.5	95.1
cal 8 mdqr	8	✓	100.0	84.6	84.6

Compound Calibration Report

Batch results D:\MassHunter\Data\2024\am 27-28\042424\QuantResults\am 28.batch.bin
Last Cal. Update 4/25/2024 11:02 AM
Analyst Name ISP\datastor
Analyte Carisoprodol

Internal Standard Carisoprodol-D7

Carisoprodol - 8 Levels, 8 Levels Used, 8 Points, 8 Points Used, 5 QCs

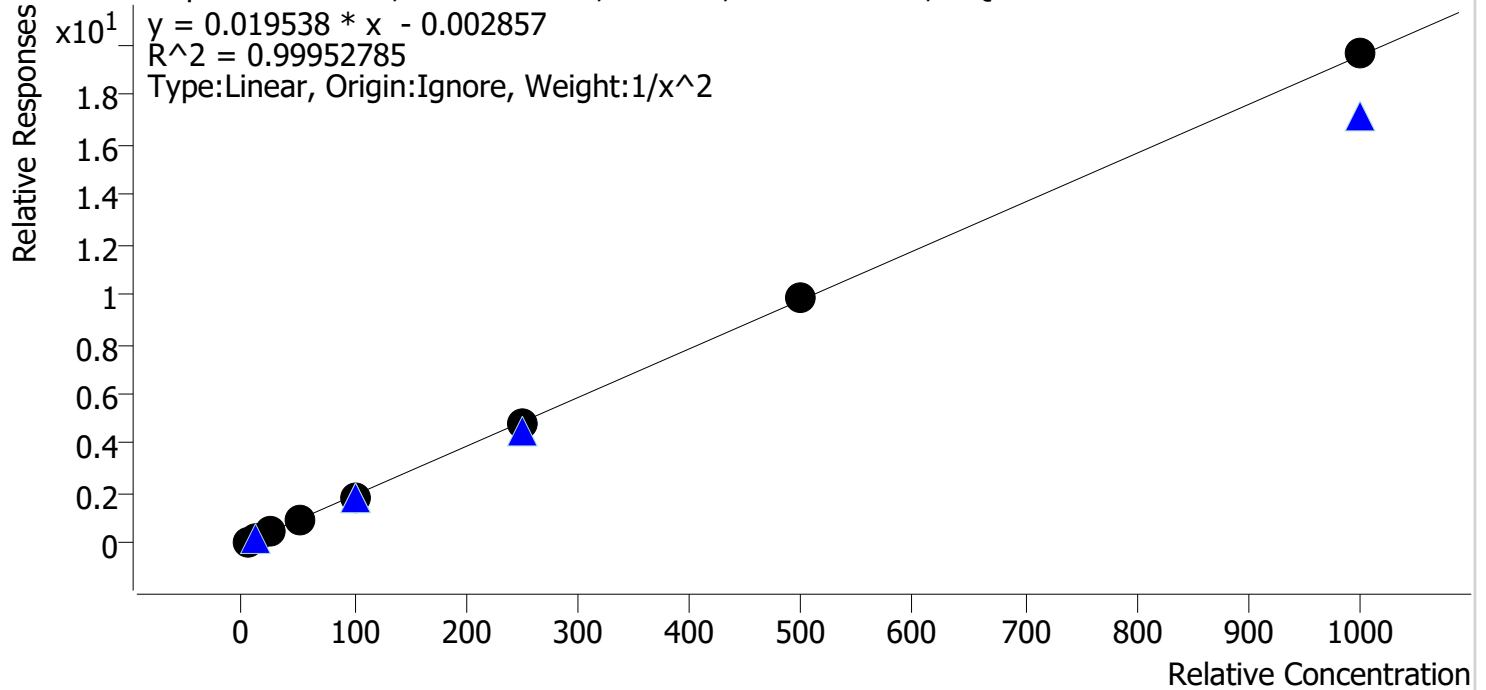


Sample	Level	Enabled	Expected Concentration	Final Concentration	Accuracy
cal 1 mdqr	1	✓	5.0	4.7	94.0
cal 2 mdqr	2	✓	10.0	10.5	105.4
cal 3 mdqr	3	✓	25.0	27.8	111.2
cal 4 mdqr	4	✓	50.0	53.8	107.7
cal 5 mdqr	5	✓	100.0	109.5	109.5
cal 6 mdqr	6	✓	250.0	251.9	100.8
cal 7 mdqr	7	✓	500.0	447.7	89.5
cal 8 mdqr	8	✓	1000.0	819.9	82.0

Compound Calibration Report

Batch results D:\MassHunter\Data\2024\lam 27-28\042424\QuantResults\lam 28.batch.bin
Last Cal. Update 4/25/2024 11:02 AM
Analyst Name ISP\datastor
Analyte Dextromethorphan **Internal Standard** Dextromethorphan-D3

Dextromethorphan - 8 Levels, 8 Levels Used, 8 Points, 8 Points Used, 5 QCs

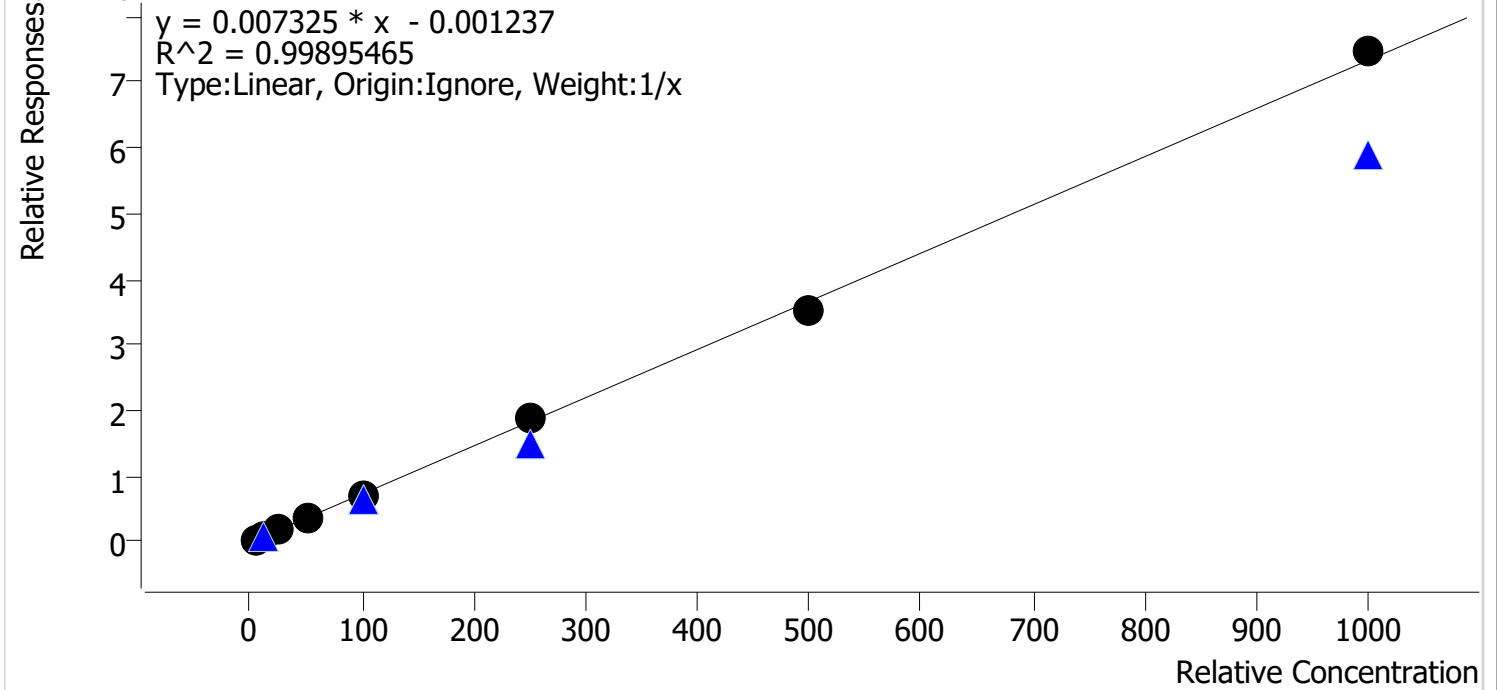


Sample	Level	Enabled	Expected Concentration	Final Concentration	Accuracy
cal 1 mdqr	1	✓	5.0	5.0	100.1
cal 2 mdqr	2	✓	10.0	9.9	99.0
cal 3 mdqr	3	✓	25.0	25.6	102.3
cal 4 mdqr	4	✓	50.0	50.7	101.4
cal 5 mdqr	5	✓	100.0	96.0	96.0
cal 6 mdqr	6	✓	250.0	250.3	100.1
cal 7 mdqr	7	✓	500.0	503.5	100.7
cal 8 mdqr	8	✓	1000.0	1004.2	100.4

Compound Calibration Report

Batch results D:\MassHunter\Data\2024\lam 27-28\042424\QuantResults\lam 28.batch.bin
Last Cal. Update 4/25/2024 11:02 AM
Analyst Name ISP\datastor
Analyte Diphenhydramine **Internal Standard** Diphenhydramine-D3

Diphenhydramine - 8 Levels, 8 Levels Used, 8 Points, 8 Points Used, 5 QCs

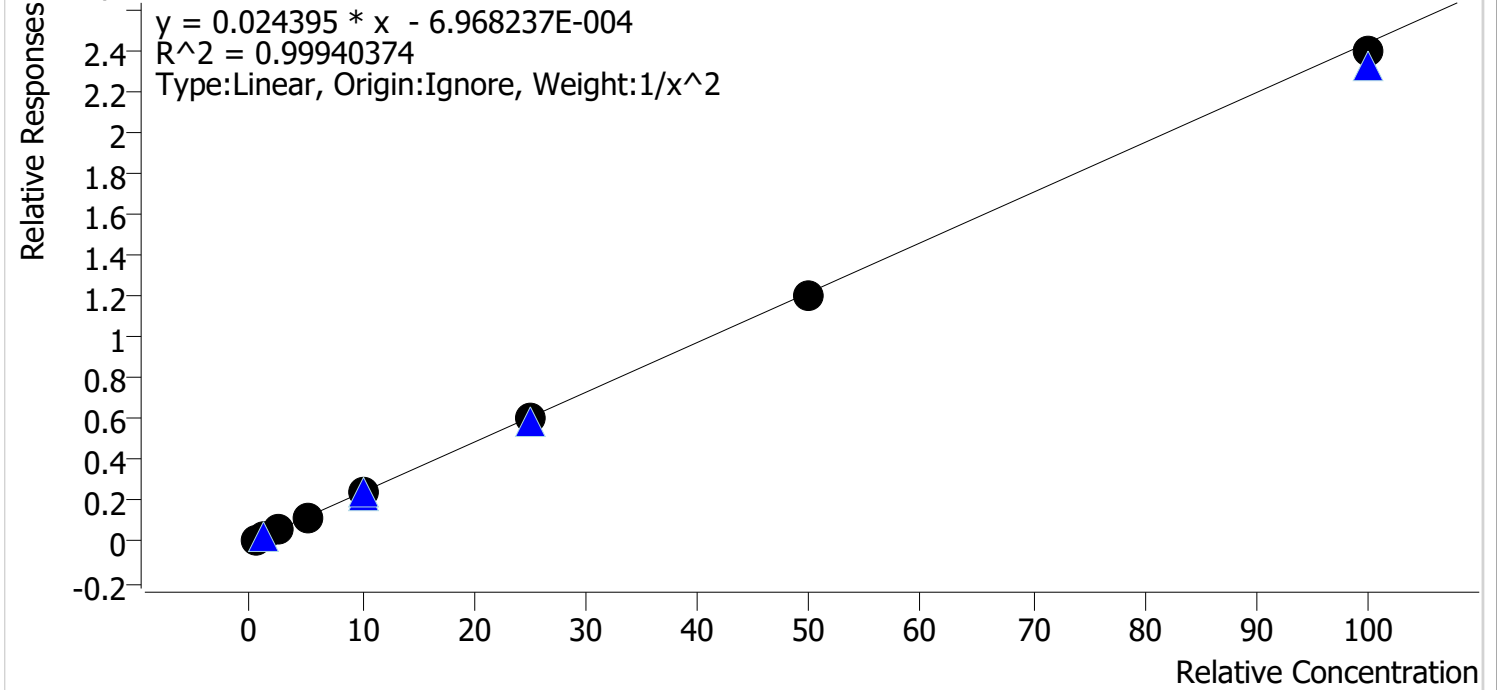


Sample	Level	Enabled	Expected Concentration	Final Concentration	Accuracy
cal 1 mdqr	1	✓	5.0	5.1	102.2
cal 2 mdqr	2	✓	10.0	10.3	103.2
cal 3 mdqr	3	✓	25.0	25.6	102.4
cal 4 mdqr	4	✓	50.0	47.2	94.4
cal 5 mdqr	5	✓	100.0	96.9	96.9
cal 6 mdqr	6	✓	250.0	258.5	103.4
cal 7 mdqr	7	✓	500.0	478.2	95.6
cal 8 mdqr	8	✓	1000.0	1018.2	101.8

Compound Calibration Report

Batch results D:\MassHunter\Data\2024\lam 27-28\042424\QuantResults\lam 28.batch.bin
Last Cal. Update 4/25/2024 11:02 AM
Analyst Name ISP\datastor
Analyte Fentanyl **Internal Standard** Fentanyl-D5

Fentanyl - 8 Levels, 8 Levels Used, 8 Points, 8 Points Used, 5 QCs

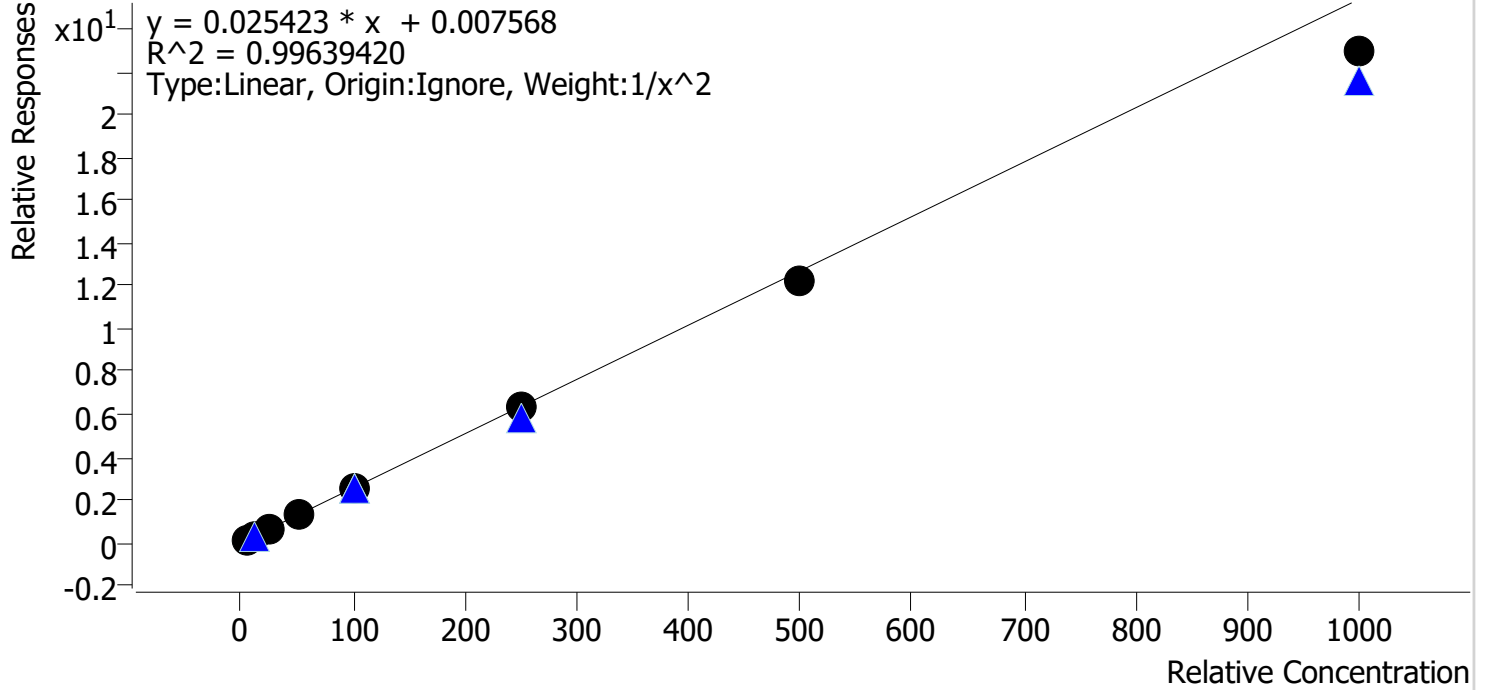


Sample	Level	Enabled	Expected Concentration	Final Concentration	Accuracy
cal 1 mdqr	1	✓	0.5	0.5	98.2
cal 2 mdqr	2	✓	1.0	1.0	103.0
cal 3 mdqr	3	✓	2.5	2.5	100.3
cal 4 mdqr	4	✓	5.0	5.2	103.2
cal 5 mdqr	5	✓	10.0	9.9	98.8
cal 6 mdqr	6	✓	25.0	25.1	100.3
cal 7 mdqr	7	✓	50.0	49.0	98.0
cal 8 mdqr	8	✓	100.0	98.2	98.2

Compound Calibration Report

Batch results D:\MassHunter\Data\2024\lam 27-28\042424\QuantResults\lam 28.batch.bin
Last Cal. Update 4/25/2024 11:02 AM
Analyst Name ISP\datastor
Analyte Fluoxetine **Internal Standard** Fluoxetine-D6

Fluoxetine - 8 Levels, 8 Levels Used, 8 Points, 8 Points Used, 5 QCs

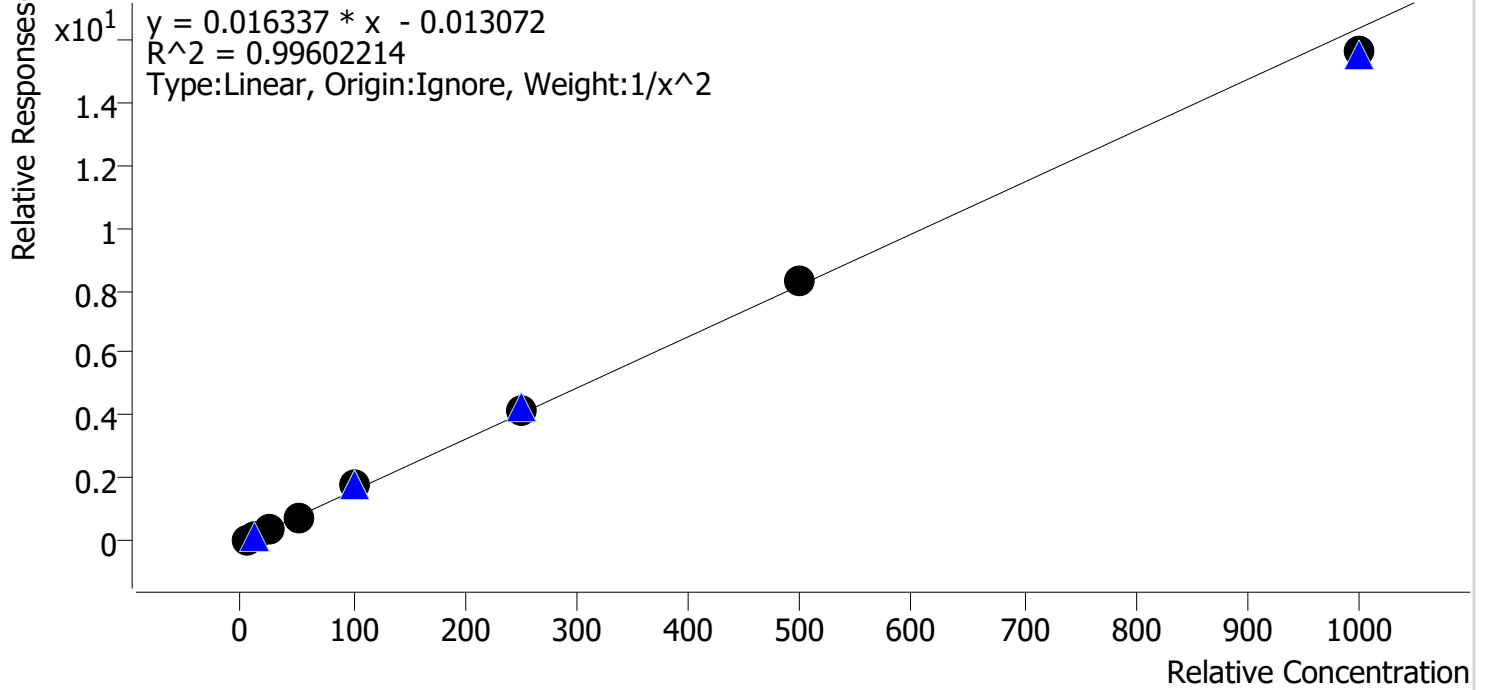


Sample	Level	Enabled	Expected Concentration	Final Concentration	Accuracy
cal 1 mdqr	1	✓	5.0	4.9	97.8
cal 2 mdqr	2	✓	10.0	10.1	100.9
cal 3 mdqr	3	✓	25.0	26.4	105.6
cal 4 mdqr	4	✓	50.0	53.2	106.4
cal 5 mdqr	5	✓	100.0	101.9	101.9
cal 6 mdqr	6	✓	250.0	252.5	101.0
cal 7 mdqr	7	✓	500.0	480.4	96.1
cal 8 mdqr	8	✓	1000.0	903.5	90.4

Compound Calibration Report

Batch results D:\MassHunter\Data\2024\lam 27-28\042424\QuantResults\lam 28.batch.bin
Last Cal. Update 4/25/2024 11:02 AM
Analyst Name ISP\datastor
Analyte Hydrocodone **Internal Standard** Hydrocodone-D6

Hydrocodone - 8 Levels, 8 Levels Used, 8 Points, 8 Points Used, 5 QCs

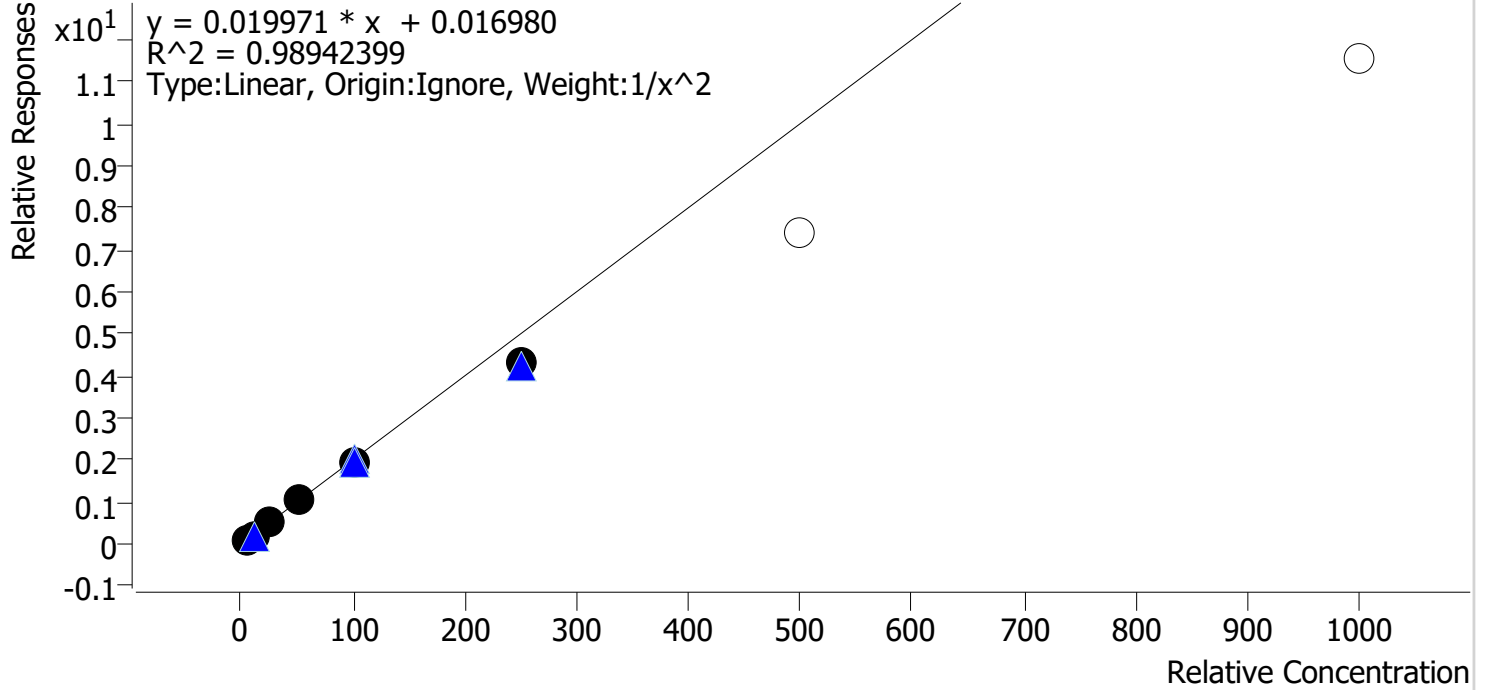


Sample	Level	Enabled	Expected Concentration	Final Concentration	Accuracy
cal 1 mdqr	1	✓	5.0	5.0	99.8
cal 2 mdqr	2	✓	10.0	10.1	101.3
cal 3 mdqr	3	✓	25.0	25.0	100.0
cal 4 mdqr	4	✓	50.0	45.2	90.3
cal 5 mdqr	5	✓	100.0	109.3	109.3
cal 6 mdqr	6	✓	250.0	253.7	101.5
cal 7 mdqr	7	✓	500.0	511.7	102.3
cal 8 mdqr	8	✓	1000.0	954.4	95.4

Compound Calibration Report

Batch results D:\MassHunter\Data\2024\lam 27-28\042424\QuantResults\lam 28.batch.bin
Last Cal. Update 4/25/2024 11:02 AM
Analyst Name ISP\datastor
Analyte Ketamine **Internal Standard** Ketamine-D4

Ketamine - 8 Levels, 6 Levels Used, 8 Points, 6 Points Used, 5 QCs



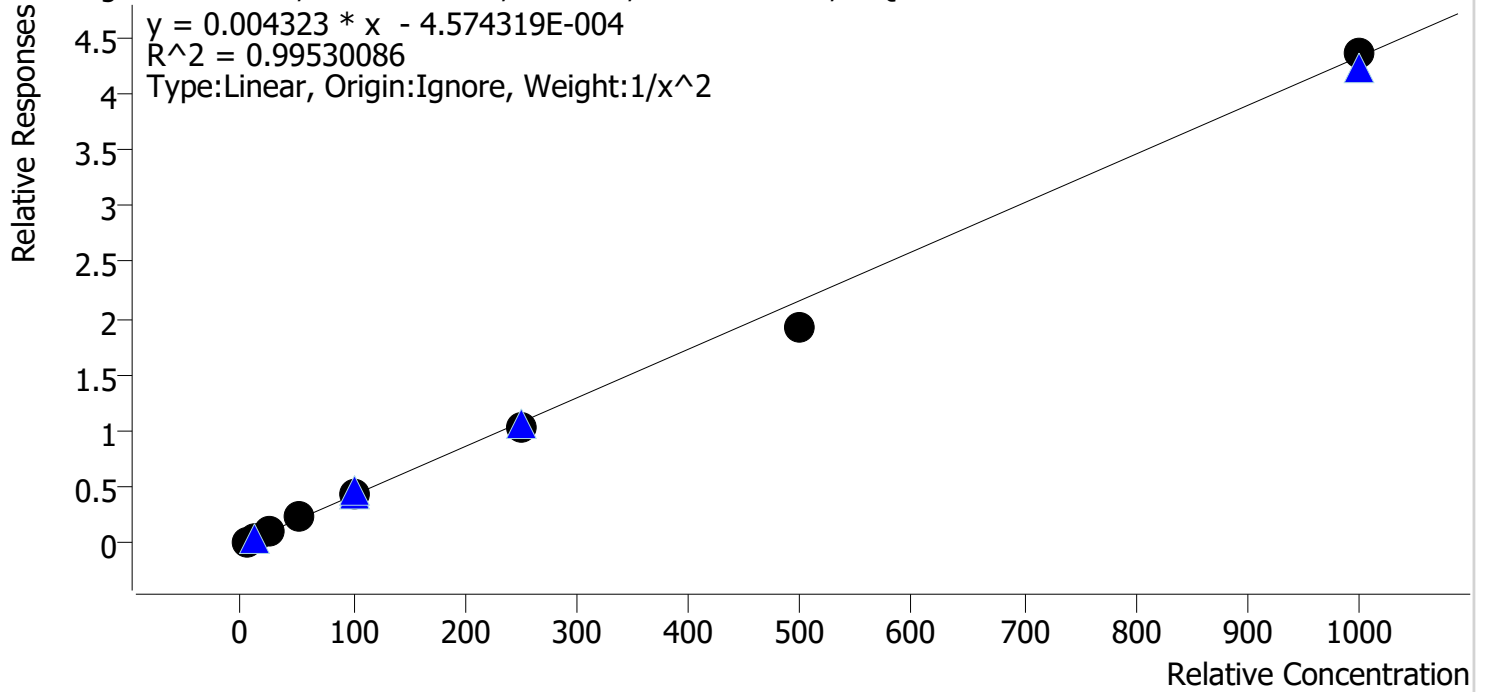
Sample	Level	Enabled	Expected Concentration	Final Concentration	Accuracy
cal 1 mdqr	1	✓	5.0	4.8	96.8
cal 2 mdqr	2	✓	10.0	10.2	102.0
cal 3 mdqr	3	✓	25.0	27.2	108.9
cal 4 mdqr	4	✓	50.0	53.8	107.7
cal 5 mdqr	5	✓	100.0	98.7	98.7
cal 6 mdqr	6	✓	250.0	214.7	85.9
cal 7 mdqr	7	✗	500.0	368.9	73.8
cal 8 mdqr	8	✗	1000.0	579.0	57.9

Compound Calibration Report

Batch results D:\MassHunter\Data\2024\lam 27-28\042424\QuantResults\lam 28.batch.bin
Last Cal. Update 4/25/2024 11:02 AM
Analyst Name ISP\datastor
Analyte Lamotrigine

Internal Standard Carisoprodol-D7

Lamotrigine - 8 Levels, 8 Levels Used, 8 Points, 8 Points Used, 5 QCs

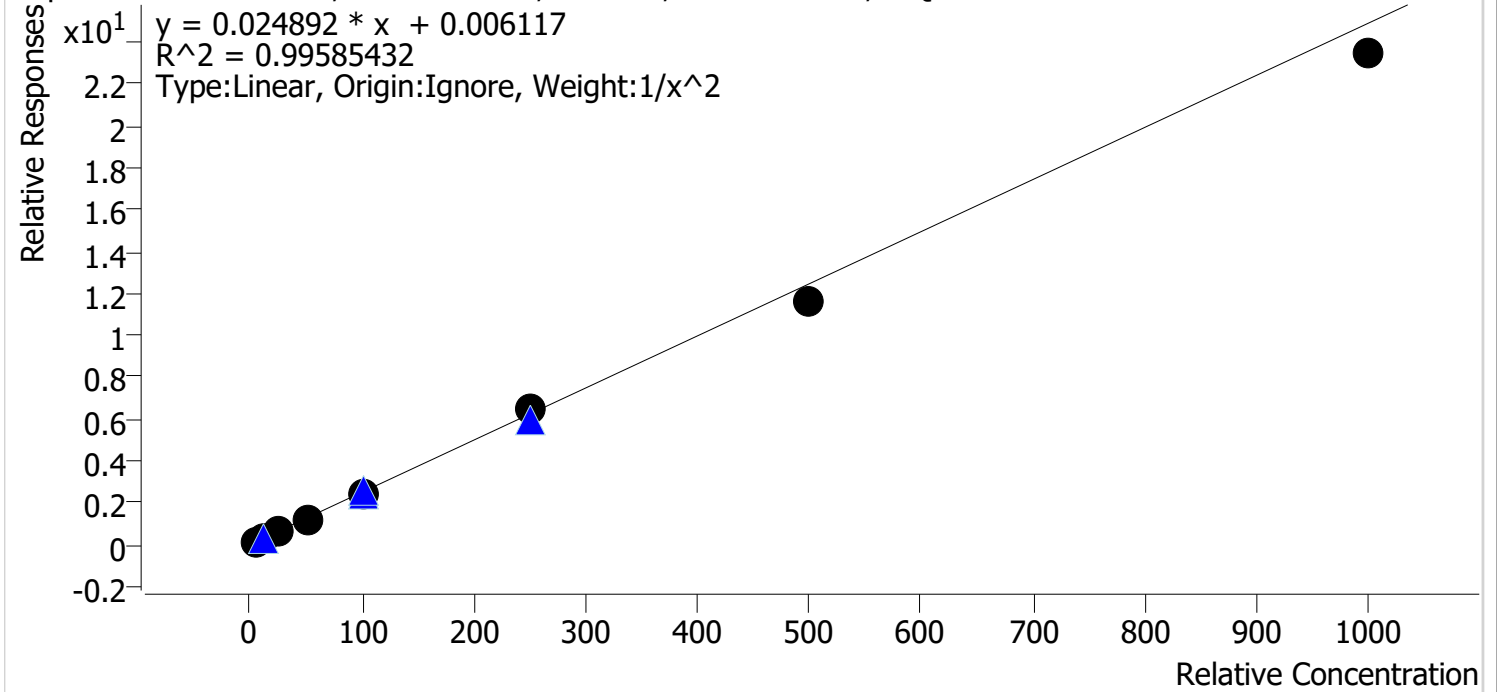


Sample	Level	Enabled	Expected Concentration	Final Concentration	Accuracy
cal 1 mdqr	1	✓	5.0	4.8	96.4
cal 2 mdqr	2	✓	10.0	10.5	105.0
cal 3 mdqr	3	✓	25.0	25.5	101.9
cal 4 mdqr	4	✓	50.0	53.5	106.9
cal 5 mdqr	5	✓	100.0	104.9	104.9
cal 6 mdqr	6	✓	250.0	236.4	94.6
cal 7 mdqr	7	✓	500.0	448.6	89.7
cal 8 mdqr	8	✓	1000.0	1006.6	100.7

Compound Calibration Report

Batch results D:\MassHunter\Data\2024\lam 27-28\042424\QuantResults\lam 28.batch.bin
Last Cal. Update 4/25/2024 11:02 AM
Analyst Name ISP\datastor
Analyte Meprobamate **Internal Standard** Meprobamate-D7

Meprobamate - 8 Levels, 8 Levels Used, 8 Points, 8 Points Used, 5 QCs

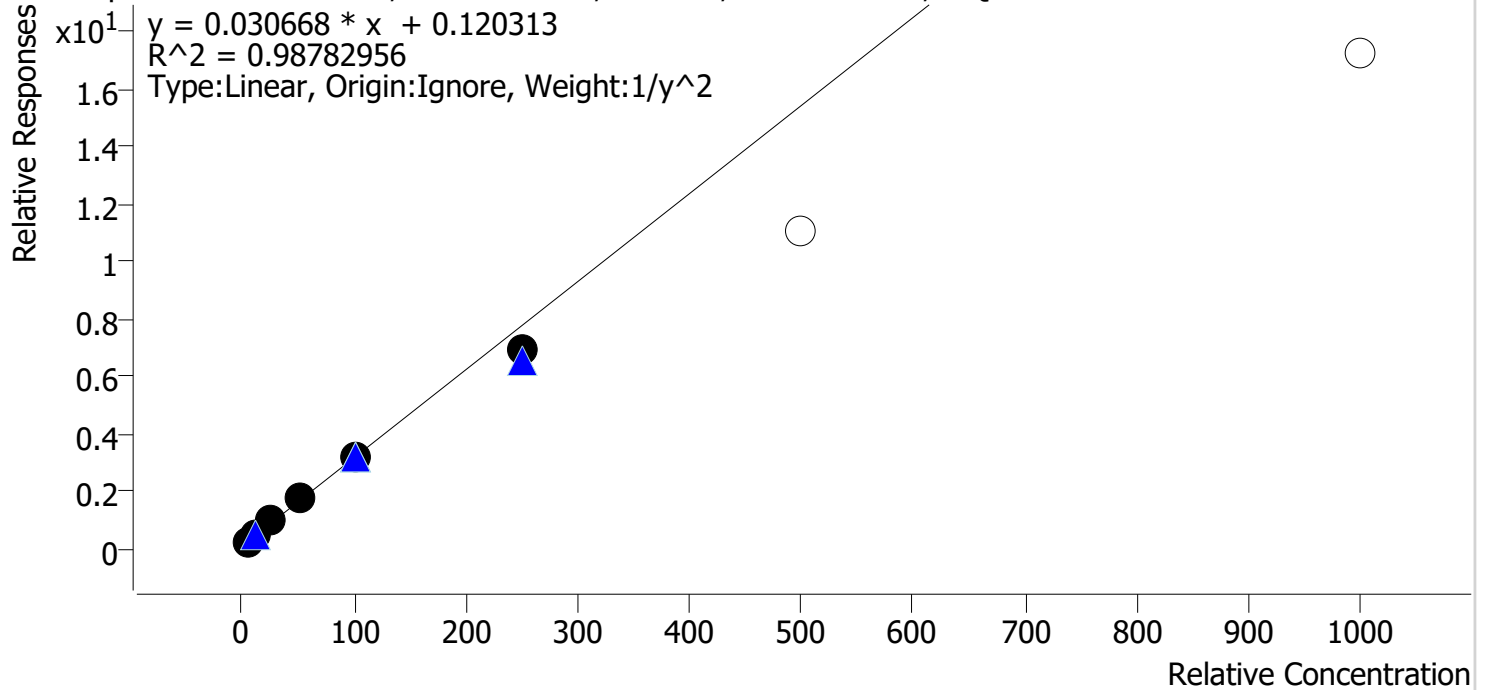


Sample	Level	Enabled	Expected Concentration	Final Concentration	Accuracy
cal 1 mdqr	1	✓	5.0	4.8	96.8
cal 2 mdqr	2	✓	10.0	10.3	102.8
cal 3 mdqr	3	✓	25.0	27.5	109.9
cal 4 mdqr	4	✓	50.0	49.5	99.0
cal 5 mdqr	5	✓	100.0	99.2	99.2
cal 6 mdqr	6	✓	250.0	262.2	104.9
cal 7 mdqr	7	✓	500.0	466.7	93.3
cal 8 mdqr	8	✓	1000.0	941.8	94.2

Compound Calibration Report

Batch results D:\MassHunter\Data\2024\am 27-28\042424\QuantResults\am 28.batch.bin
Last Cal. Update 4/25/2024 11:02 AM
Analyst Name ISP\datastor
Analyte Methamphetamine **Internal Standard** **Methamphetamine-D11**

Methamphetamine - 8 Levels, 6 Levels Used, 8 Points, 6 Points Used, 5 QCs

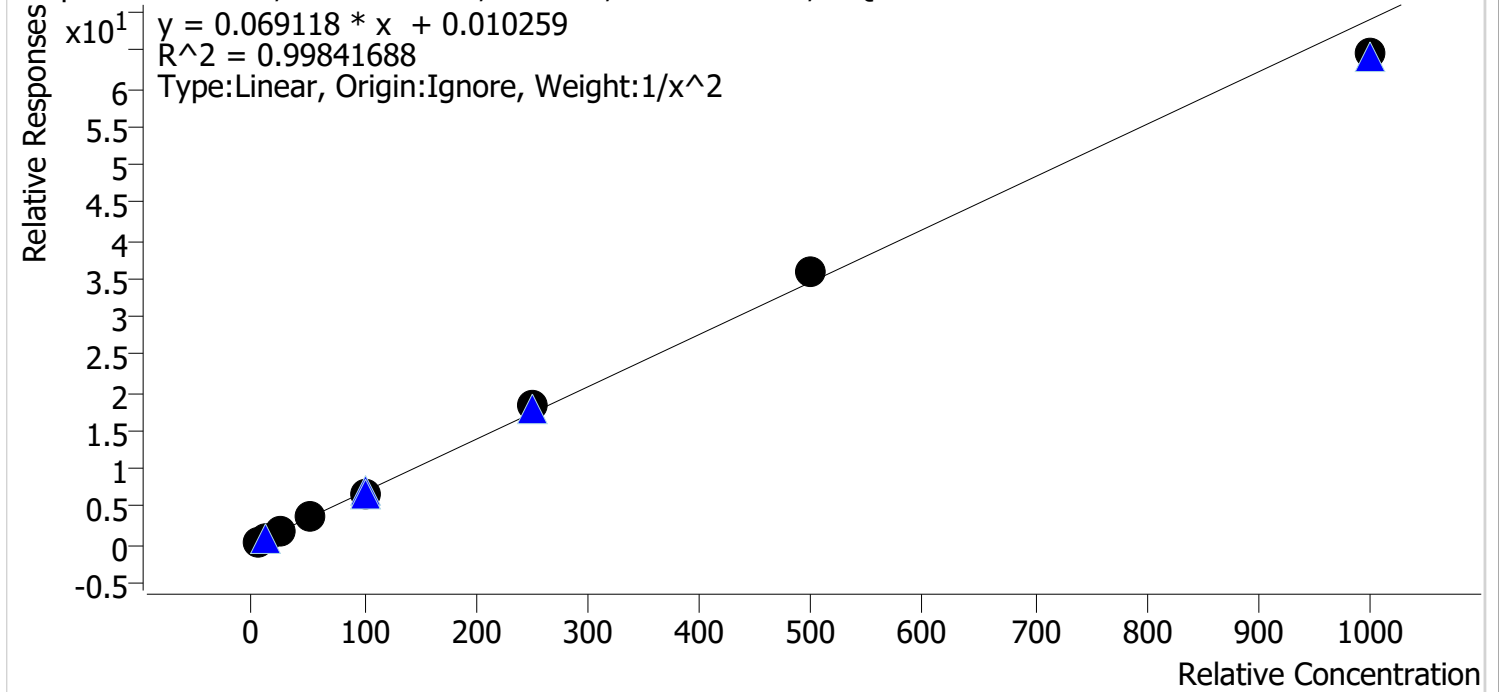


Sample	Level	Enabled	Expected Concentration	Final Concentration	Accuracy
cal 1 mdqr	1	✓	5.0	4.5	89.4
cal 2 mdqr	2	✓	10.0	10.9	109.3
cal 3 mdqr	3	✓	25.0	27.4	109.7
cal 4 mdqr	4	✓	50.0	55.1	110.2
cal 5 mdqr	5	✓	100.0	99.0	99.0
cal 6 mdqr	6	✓	250.0	223.2	89.3
cal 7 mdqr	7	✗	500.0	358.2	71.6
cal 8 mdqr	8	✗	1000.0	559.0	55.9

Compound Calibration Report

Batch results D:\MassHunter\Data\2024\lam 27-28\042424\QuantResults\lam 28.batch.bin
Last Cal. Update 4/25/2024 11:02 AM
Analyst Name ISP\datastor
Analyte Morphine **Internal Standard** Morphine-D6

Morphine - 8 Levels, 8 Levels Used, 8 Points, 8 Points Used, 5 QCs

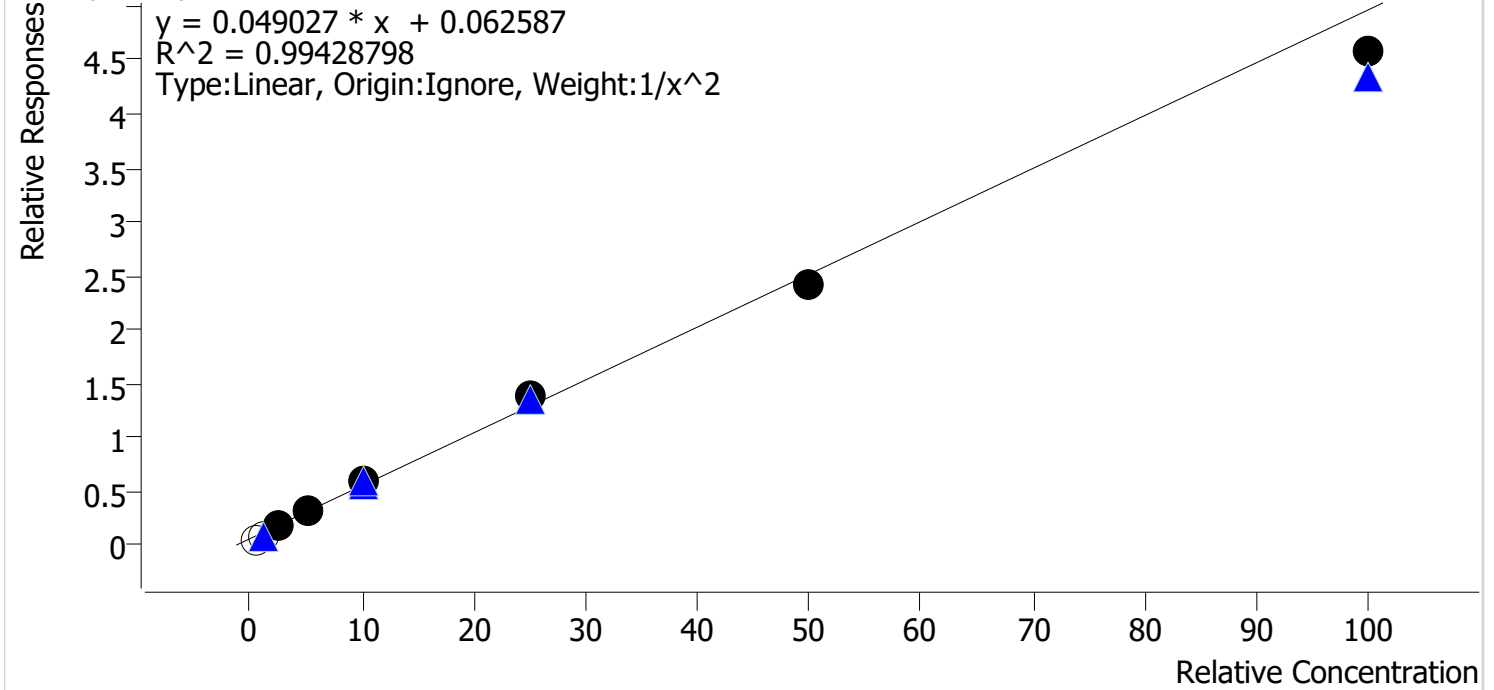


Sample	Level	Enabled	Expected Concentration	Final Concentration	Accuracy
cal 1 mdqr	1	✓	5.0	5.0	100.0
cal 2 mdqr	2	✓	10.0	10.0	100.0
cal 3 mdqr	3	✓	25.0	24.9	99.8
cal 4 mdqr	4	✓	50.0	50.0	100.1
cal 5 mdqr	5	✓	100.0	98.1	98.1
cal 6 mdqr	6	✓	250.0	262.7	105.1
cal 7 mdqr	7	✓	500.0	517.2	103.4
cal 8 mdqr	8	✓	1000.0	934.9	93.5

Compound Calibration Report

Batch results	D:\MassHunter\Data\2024\lam 27-28\042424\QuantResults\lam 28.batch.bin		
Last Cal. Update	4/25/2024 11:02 AM		
Analyst Name	ISP\datastor		
Analyte	Norbuprenorphine	Internal Standard	Norbuprenorphine-D3

Norbuprenorphine - 8 Levels, 6 Levels Used, 8 Points, 6 Points Used, 5 QCs



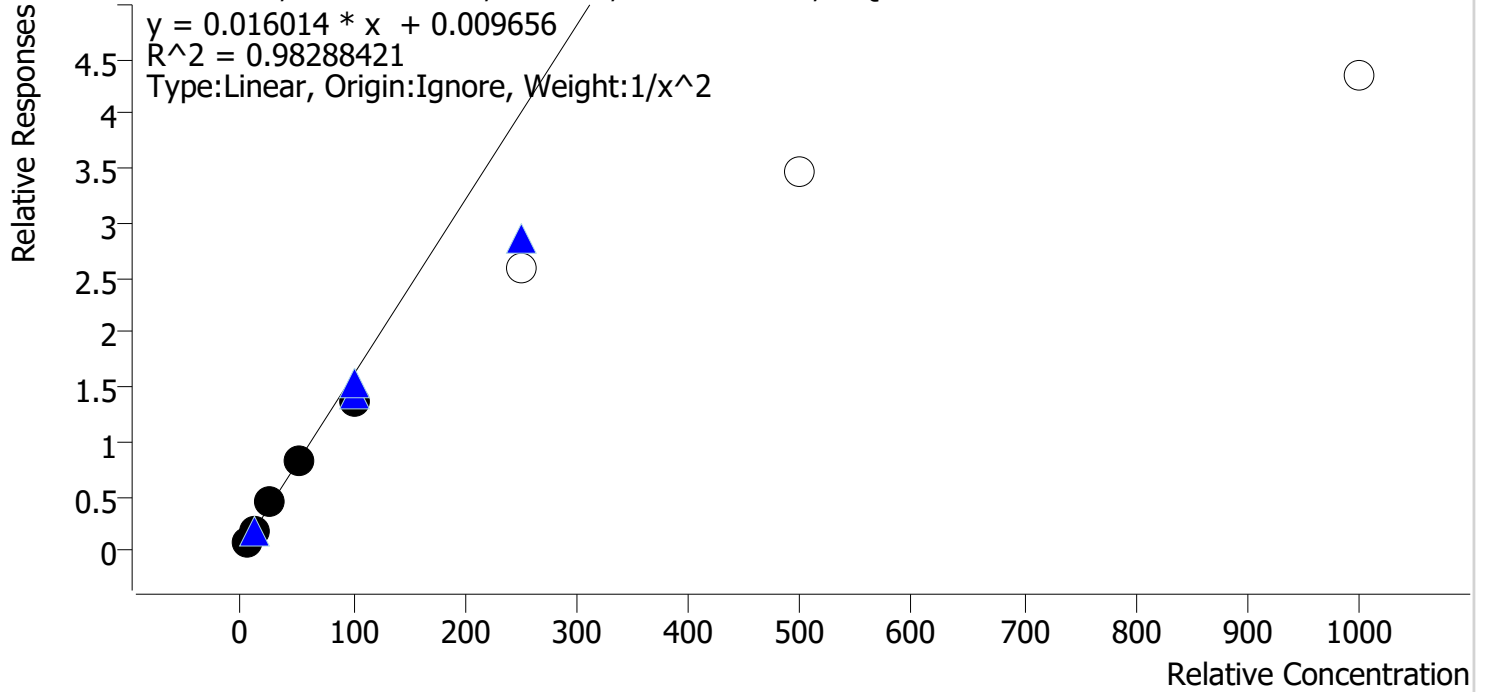
Sample	Level	Enabled	Expected Concentration	Final Concentration	Accuracy
cal 1 mdqr	1	x	0.5	0.0	0.0
cal 2 mdqr	2	x	1.0	0.0	0.3
cal 3 mdqr	3	✓	2.5	2.5	98.0
cal 4 mdqr	4	✓	5.0	5.0	99.6
cal 5 mdqr	5	✓	10.0	10.8	107.6
cal 6 mdqr	6	✓	25.0	26.7	106.6
cal 7 mdqr	7	✓	50.0	48.0	96.0
cal 8 mdqr	8	✓	100.0	92.1	92.1

Compound Calibration Report

Batch results D:\MassHunter\Data\2024\am 27-28\042424\QuantResults\am 28.batch.bin
Last Cal. Update 4/25/2024 11:02 AM
Analyst Name ISP\datastor
Analyte Trazodone

Internal Standard Trazodone-D6

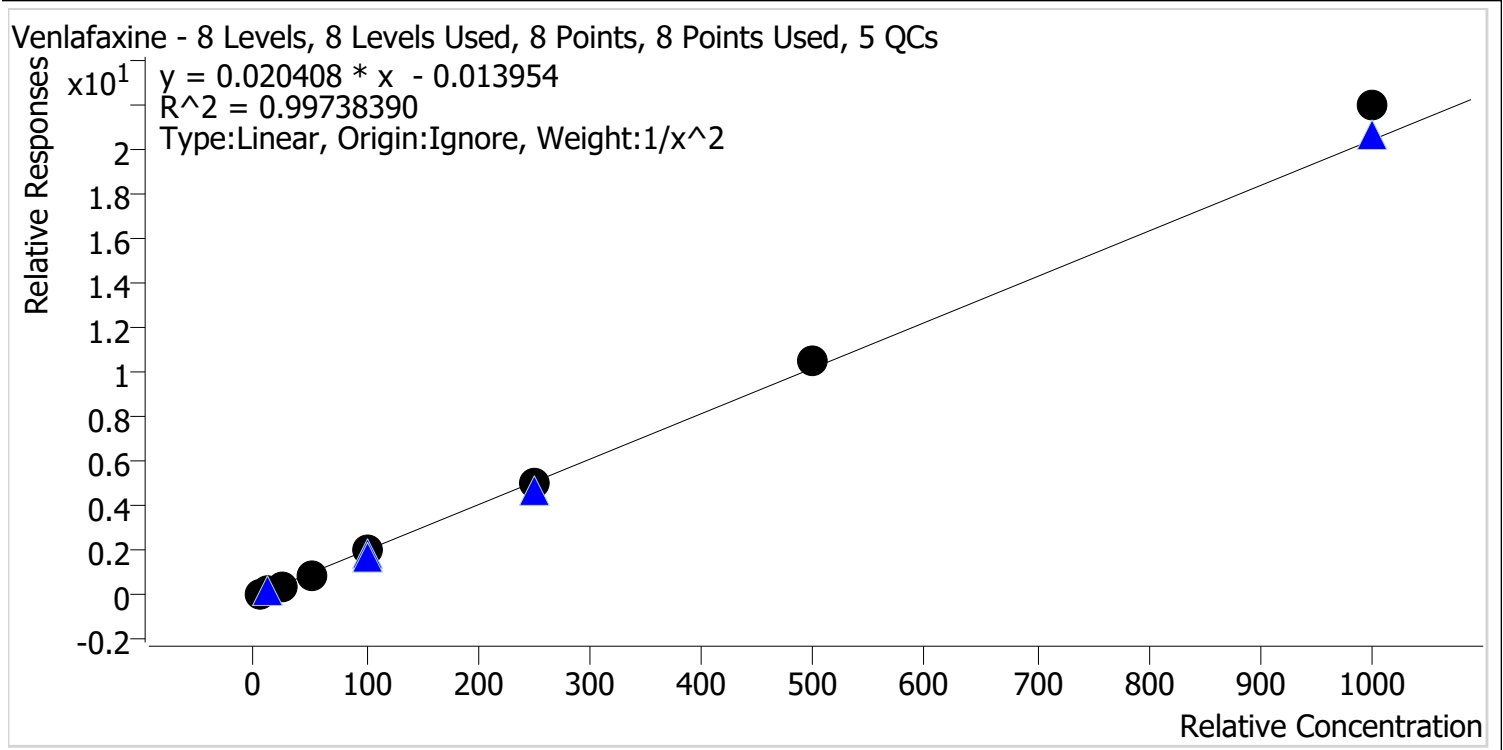
Trazodone - 8 Levels, 5 Levels Used, 8 Points, 5 Points Used, 5 QCs



Sample	Level	Enabled	Expected Concentration	Final Concentration	Accuracy
cal 1 mdqr	1	✓	5.0	4.9	98.3
cal 2 mdqr	2	✓	10.0	9.9	98.7
cal 3 mdqr	3	✓	25.0	28.3	113.3
cal 4 mdqr	4	✓	50.0	52.1	104.3
cal 5 mdqr	5	✓	100.0	85.4	85.4
cal 6 mdqr	6	✗	250.0	160.3	64.1
cal 7 mdqr	7	✗	500.0	216.8	43.4
cal 8 mdqr	8	✗	1000.0	271.8	27.2

Compound Calibration Report

Batch results D:\MassHunter\Data\2024\lam 27-28\042424\QuantResults\lam 28.batch.bin
Last Cal. Update 4/25/2024 11:02 AM
Analyst Name ISP\datastor
Analyte Venlafaxine **Internal Standard** Venlafaxine-D6

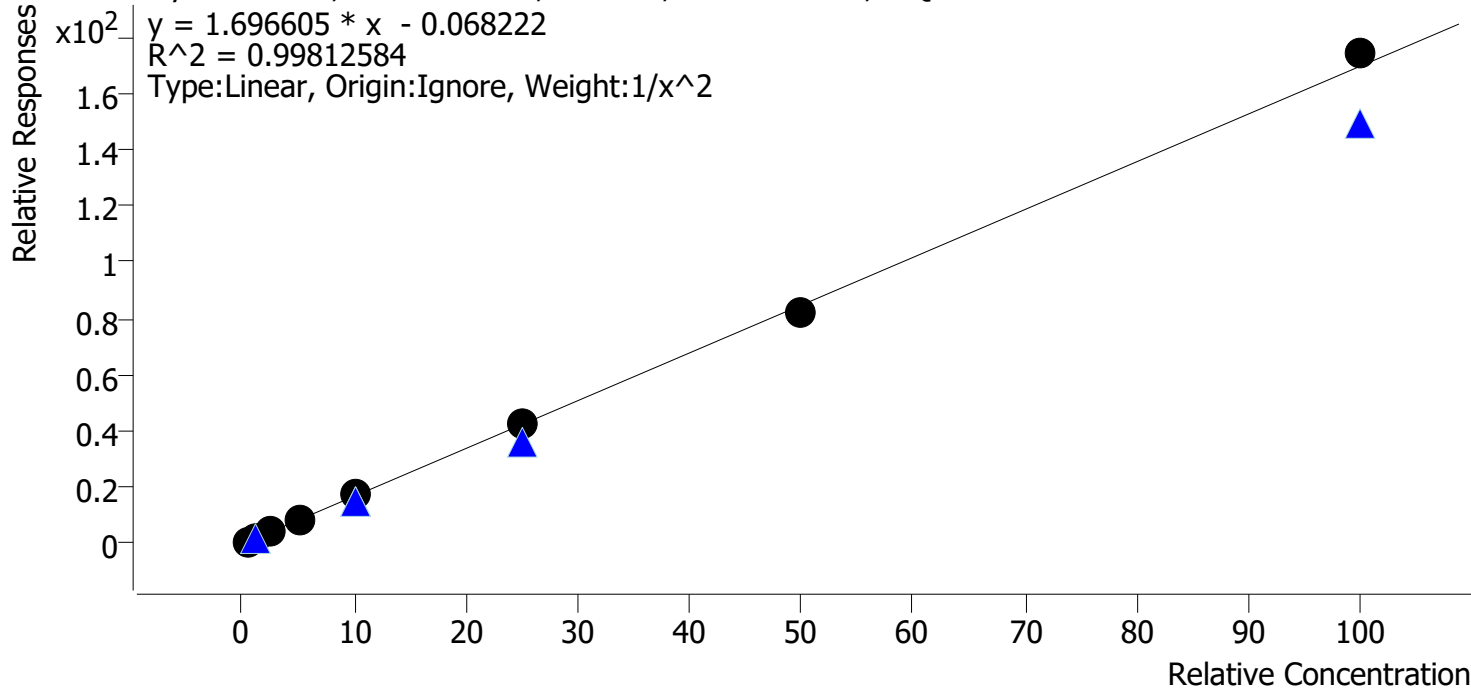


Sample	Level	Enabled	Expected Concentration	Final Concentration	Accuracy
cal 1 mdqr	1	✓	5.0	5.2	103.2
cal 2 mdqr	2	✓	10.0	9.7	96.7
cal 3 mdqr	3	✓	25.0	23.6	94.4
cal 4 mdqr	4	✓	50.0	48.0	96.0
cal 5 mdqr	5	✓	100.0	98.5	98.5
cal 6 mdqr	6	✓	250.0	251.3	100.5
cal 7 mdqr	7	✓	500.0	516.1	103.2
cal 8 mdqr	8	✓	1000.0	1075.2	107.5

Compound Calibration Report

Batch results D:\MassHunter\Data\2024\am 27-28\042424\QuantResults\am 28.batch.bin
Last Cal. Update 4/25/2024 11:02 AM
Analyst Name ISP\datastor
Analyte Fluorofentanyl **Internal Standard** Fluorofentanyl-D5

Fluorofentanyl - 8 Levels, 8 Levels Used, 8 Points, 8 Points Used, 5 QCs

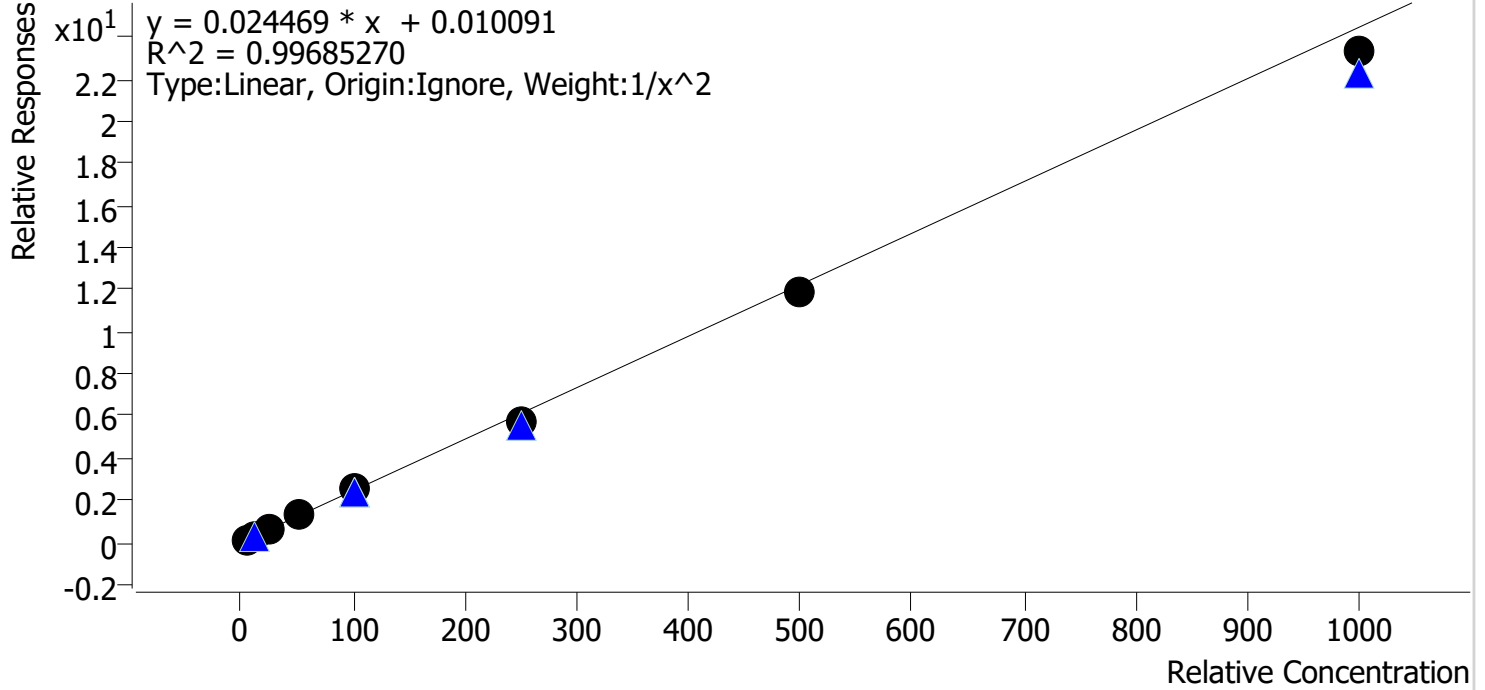


Sample	Level	Enabled	Expected Concentration	Final Concentration	Accuracy
cal 1 mdqr	1	✓	0.5	0.5	96.9
cal 2 mdqr	2	✓	1.0	1.1	107.4
cal 3 mdqr	3	✓	2.5	2.5	98.6
cal 4 mdqr	4	✓	5.0	4.8	96.5
cal 5 mdqr	5	✓	10.0	10.2	101.7
cal 6 mdqr	6	✓	25.0	24.8	99.4
cal 7 mdqr	7	✓	50.0	48.5	96.9
cal 8 mdqr	8	✓	100.0	102.6	102.6

Compound Calibration Report

Batch results D:\MassHunter\Data\2024\lam 27-28\042424\QuantResults\lam 28.batch.bin
Last Cal. Update 4/25/2024 11:02 AM
Analyst Name ISP\datastor
Analyte Bromazolam **Internal Standard** Bromazolam-D5

Bromazolam - 8 Levels, 8 Levels Used, 8 Points, 8 Points Used, 5 QCs



Sample	Level	Enabled	Expected Concentration	Final Concentration	Accuracy
cal 1 mdqr	1	✓	5.0	4.8	96.2
cal 2 mdqr	2	✓	10.0	10.6	105.6
cal 3 mdqr	3	✓	25.0	25.6	102.2
cal 4 mdqr	4	✓	50.0	52.8	105.6
cal 5 mdqr	5	✓	100.0	104.2	104.2
cal 6 mdqr	6	✓	250.0	235.8	94.3
cal 7 mdqr	7	✓	500.0	483.1	96.6
cal 8 mdqr	8	✓	1000.0	952.6	95.3

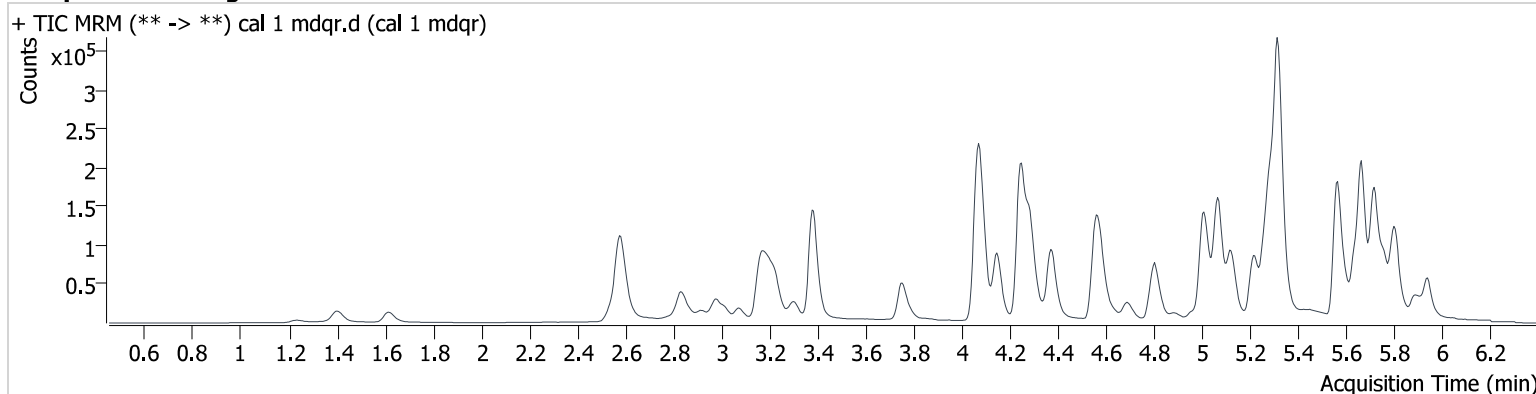
AM #28 Multi-Drug Quant. Results

Batch results D:\MassHunter\Data\2024\am 27-28\042424\QuantResults\am 28.batch.bin
Calibration Last Update 4/25/2024 11:02:08 AM

Instrument 69679
Type Cal
Acq. Method mdqp1 121523.m
Sample Position P2-A5
Injection Volume 2
Acq. Date-Time 4/24/2024 1:37:14 PM
Sample Info.

Data File cal 1 mdqr.d
Sample cal 1 mdqr
Operator Anne Nord
Comment Only drugs and concentrations listed on the laboratory report itself are appropriate to be used for interpretation purposes. Any drugs or values in the notes but not included on the report are used by laboratory personnel to make determinations/reach conclusions within the confines of the methods.

Sample Chromatogram



Name	RT	Resp.	S/N	Ratio	S/N	ISTD Resp.	Final Conc.
7-aminoclonazepam	4.263	2012	∞	125.93	∞	33913	4.821 ng/ml
Amphetamine	3.069	4732	325.2	226.92	223.5	68232	4.867 ng/ml
Bromazolam	5.809	5717	512.2	101.75	1003.1	44753	4.808 ng/ml
Buprenorphine	5.942	1608	116.5	17.66	28.7	40134	0.495 ng/ml
Carisoprodol	5.714	10006	49019.9	55.83	314.0	74711	4.701 ng/ml
Citalopram	5.261	20397	2283.6	38.13	13503.6	175660	4.905 ng/ml
Clonazepam	5.607	1967	7034.5	28.31	872.3	5499	5.535 ng/ml
Dextromethorphan	5.300	13782	3368.3	72.48	335.3	145188	5.005 ng/ml
Diphenhydramine	5.321	24220	5109.6	284.61	3124.7	669423	5.108 ng/ml
Doxylamine	4.581	57910	2159.3	94.30	2109.1	351440	4.801 ng/ml
EDDP	5.289	18918	3415.2	46.47	∞	188497	4.934 ng/ml
Fentanyl	5.137	2369	323.9	138.38	542.7	210060	0.491 ng/ml
Fluorofentanyl	5.193	2081	1872.1	115.09	15.1	2761	0.484 ng/ml
Fluoxetine	5.722	29211	5361.7	6.73	2641.0	221510	4.889 ng/ml
Hydrocodone	3.060	2824	13555.7	48.78	131.9	41235	4.992 ng/ml
Ketamine	4.077	16607	2585.4	37.60	592.3	146145	4.840 ng/ml
Lamotrigine	4.326	1523	1110.9	109.26	1478.2	74711	4.820 ng/ml
Meprobamate	4.908	1933	538.5	50.60	251.5	15273	4.838 ng/ml
Methadone	5.670	31495	2717.2	62.99	2178.3	321194	5.181 ng/ml
Methamphetamine	3.227	53390	∞	36.17	943.7	207450	4.469 ng/ml
Morphine	1.241	989	123.1	18.66	47.2	2778	5.001 ng/ml
Norfentanyl	4.098	1356	535.9	26.20	∞	328999	0.516 ng/ml
O-Desmethylvenlafaxine	4.091	12674	82.6	534.01	1147.5	8552	4.954 ng/ml
Trazodone	5.281	20437	1604.6	135.98	4058.2	231355	4.913 ng/ml
Venlafaxine	5.071	32837	2605.2	35.90	2094.2	359525	5.159 ng/ml

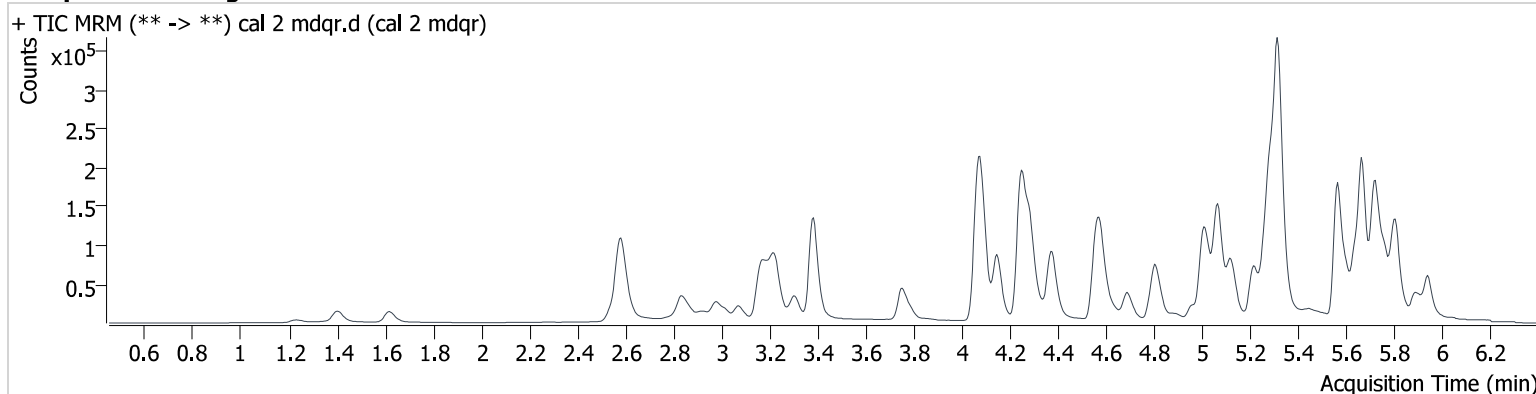
AM #28 Multi-Drug Quant. Results

Batch results D:\MassHunter\Data\2024\am 27-28\042424\QuantResults\am 28.batch.bin
Calibration Last Update 4/25/2024 11:02:08 AM

Instrument 69679
Type Cal
Acq. Method mdqp1 121523.m
Sample Position P2-B5
Injection Volume 2
Acq. Date-Time 4/24/2024 1:46:06 PM
Sample Info.

Data File cal 2 mdqr.d
Sample cal 2 mdqr
Operator Anne Nord
Comment Only drugs and concentrations listed on the laboratory report itself are appropriate to be used for interpretation purposes. Any drugs or values in the notes but not included on the report are used by laboratory personnel to make determinations/reach conclusions within the confines of the methods.

Sample Chromatogram



Name	RT	Resp.	S/N	Ratio	S/N	ISTD Resp.	Final Conc.
7-aminoclonazepam	4.263	3463	26005.3	111.70	542.6	29614	10.437 ng/ml
Amphetamine	3.074	7925	501.2	234.31	2283.2	58879	10.741 ng/ml
Bromazolam	5.809	10571	258.7	96.88	386.1	39377	10.559 ng/ml
Buprenorphine	5.947	2712	207.9	13.44	41.9	38408	0.968 ng/ml
Carisoprodol	5.719	16042	20330.3	65.44	307.7	57645	10.535 ng/ml
Citalopram	5.261	36748	∞	36.79	∞	154130	10.183 ng/ml
Clonazepam	5.607	3142	44797.1	38.47	1114.7	6488	7.761 ng/ml
Dextromethorphan	5.300	24529	3863.9	73.29	8970.3	128722	9.899 ng/ml
Diphenhydramine	5.321	42170	3634.2	297.25	10367.7	566869	10.325 ng/ml
Doxylamine	4.581	94925	6816.3	95.83	5202.5	282611	10.226 ng/ml
EDDP	5.289	39832	3607.8	40.32	945.3	188834	10.338 ng/ml
Fentanyl	5.137	4425	946.9	128.43	438.0	181025	1.030 ng/ml
Fluorofentanyl	5.198	3946	36.5	116.81	389.4	2249	1.074 ng/ml
Fluoxetine	5.722	54063	13251.3	6.15	3907.2	204810	10.085 ng/ml
Hydrocodone	3.060	5315	∞	36.85	258.8	34876	10.129 ng/ml
Ketamine	4.077	27278	1323.4	37.68	673.6	123631	10.198 ng/ml
Lamotrigine	4.326	2590	1305.0	98.86	3669.0	57645	10.499 ng/ml
Meprobamate	4.908	3051	1293.9	50.10	208.3	11644	10.282 ng/ml
Methadone	5.670	53280	12912.4	70.49	4736.8	289039	9.303 ng/ml
Methamphetamine	3.227	81023	5093.1	34.97	2309.0	177860	10.931 ng/ml
Morphine	1.236	1724	121.5	20.42	158.6	2457	10.004 ng/ml
Norfentanyl	4.098	2214	283.5	31.85	3033.0	281255	0.947 ng/ml
O-Desmethylvenlafaxine	4.091	21332	520.9	542.22	4375.8	7296	10.047 ng/ml
Trazodone	5.281	32593	∞	133.32	4008.1	194251	9.875 ng/ml
Venlafaxine	5.066	55747	3248.9	36.13	911.8	304078	9.667 ng/ml

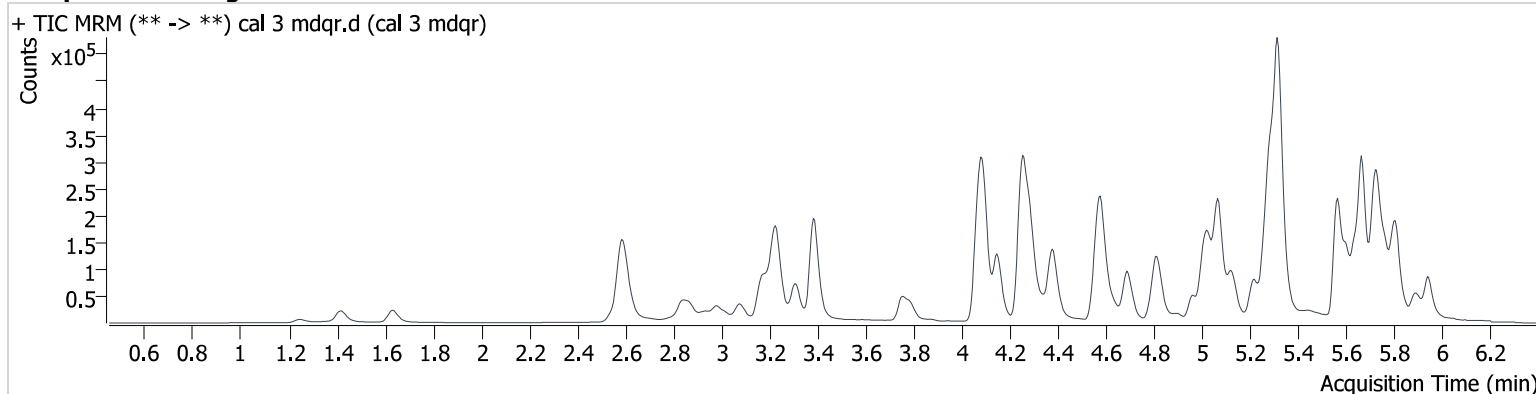
AM #28 Multi-Drug Quant. Results

Batch results D:\MassHunter\Data\2024\am 27-28\042424\QuantResults\am 28.batch.bin
Calibration Last Update 4/25/2024 11:02:08 AM

Instrument 69679
Type Cal
Acq. Method mdqp1 121523.m
Sample Position P2-C5
Injection Volume 2
Acq. Date-Time 4/24/2024 1:54:49 PM
Sample Info.

Data File cal 3 mdqr.d
Sample cal 3 mdqr
Operator Anne Nord
Comment Only drugs and concentrations listed on the laboratory report itself are appropriate to be used for interpretation purposes. Any drugs or values in the notes but not included on the report are used by laboratory personnel to make determinations/reach conclusions within the confines of the methods.

Sample Chromatogram



Name	RT	Resp.	S/N	Ratio	S/N	ISTD Resp.	Final Conc.
7-aminoclonazepam	4.263	9215	∞	123.57	2938.8	32156	26.968 ng/ml
Amphetamine	3.079	17424	401.9	246.03	1443.1	62819	23.591 ng/ml
Bromazolam	5.809	25288	398.9	99.07	509.1	39792	25.559 ng/ml
Buprenorphine	5.947	6933	393.7	15.36	60.9	38063	2.696 ng/ml
Carisoprodol	5.719	43966	3279.5	61.01	1917.4	62341	27.789 ng/ml
Citalopram	5.261	99784	20669.9	34.91	312339.5	165641	25.888 ng/ml
Clonazepam	5.612	7718	∞	34.84	13607.3	5082	25.961 ng/ml
Dextromethorphan	5.300	65370	49380.2	71.36	37277.2	131560	25.578 ng/ml
Diphenhydramine	5.321	114899	1793.5	286.87	155306.3	616664	25.605 ng/ml
Doxylamine	4.581	259702	8576.0	93.38	4288.5	296495	27.349 ng/ml
EDDP	5.289	89723	88220.4	44.66	∞	177863	24.680 ng/ml
Fentanyl	5.137	11502	1145.4	132.73	1670.9	190103	2.509 ng/ml
Fluorofentanyl	5.198	10066	6035.2	117.93	912.3	2447	2.465 ng/ml
Fluoxetine	5.722	140953	12365.1	6.54	∞	207663	26.400 ng/ml
Hydrocodone	3.060	13672	∞	39.67	270.4	34597	24.988 ng/ml
Ketamine	4.077	73610	8906.7	38.27	10320.2	131241	27.235 ng/ml
Lamotrigine	4.331	6835	4027.3	102.98	20737.8	62341	25.465 ng/ml
Meprobamate	4.908	9281	1676.2	44.97	865.3	13454	27.466 ng/ml
Methadone	5.670	152562	5732.7	66.53	14736.3	300580	24.748 ng/ml
Methamphetamine	3.232	186970	30450.1	36.44	6068.9	194403	27.437 ng/ml
Morphine	1.252	4422	736.0	19.72	86.2	2550	24.944 ng/ml
Norbuprenorphine	5.027	1070	3332.4	93.44	2669.5	5854	2.451 ng/ml
Norfentanyl	4.098	6039	1123.3	28.68	10114.3	288952	2.448 ng/ml
O-Desmethylvenlafaxine	4.096	56695	1710.0	548.25	10181.3	7720	25.662 ng/ml
Trazodone	5.281	91667	7248.7	130.15	18525.2	197883	28.325 ng/ml
Venlafaxine	5.071	154439	6722.9	36.43	2714.8	330329	23.593 ng/ml

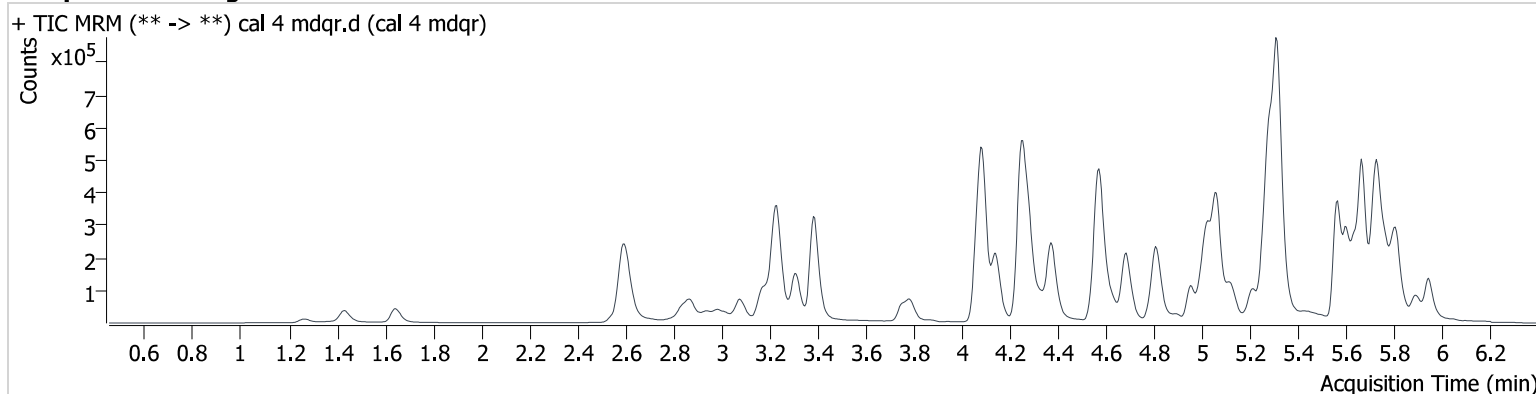
AM #28 Multi-Drug Quant. Results

Batch results D:\MassHunter\Data\2024\am 27-28\042424\QuantResults\am 28.batch.bin
Calibration Last Update 4/25/2024 11:02:08 AM

Instrument 69679
Type Cal
Acq. Method mdqp1 121523.m
Sample Position P2-D5
Injection Volume 2
Acq. Date-Time 4/24/2024 2:03:31 PM
Sample Info.

Data File cal 4 mdqr.d
Sample cal 4 mdqr
Operator Anne Nord
Comment Only drugs and concentrations listed on the laboratory report itself are appropriate to be used for interpretation purposes. Any drugs or values in the notes but not included on the report are used by laboratory personnel to make determinations/reach conclusions within the confines of the methods.

Sample Chromatogram



Name	RT	Resp.	S/N	Ratio	S/N	ISTD Resp.	Final Conc.
7-aminoclonazepam	4.258	20194	∞	119.23	7539.0	36758	52.575 ng/ml
Amphetamine	3.079	44126	3177.8	272.66	4530.9	76645	50.447 ng/ml
Bromazolam	5.809	55661	1309.6	95.97	202.6	42751	52.797 ng/ml
Buprenorphine	5.947	16281	527.0	15.01	184.8	45549	5.411 ng/ml
Carisoprodol	5.714	93455	123387.5	64.24	6594.1	69230	53.841 ng/ml
Citalopram	5.256	225647	∞	38.20	214256.2	189570	51.254 ng/ml
Clonazepam	5.607	18495	56171.2	36.98	18579.6	6757	47.398 ng/ml
Dextromethorphan	5.295	151190	78754.7	76.15	2621942.4	153129	50.680 ng/ml
Diphenhydramine	5.316	249270	3097.3	310.55	211483.9	723592	47.198 ng/ml
Doxylamine	4.571	616583	∞	94.73	24044.0	353547	54.873 ng/ml
EDDP	5.284	225150	12969.4	44.32	213373.7	223163	49.331 ng/ml
Fentanyl	5.132	27586	2062.8	131.17	4441.3	220473	5.158 ng/ml
Fluorofentanyl	5.188	25365	11898.3	117.34	645.2	3124	4.826 ng/ml
Fluoxetine	5.722	296810	933118.4	6.31	23598.6	218279	53.187 ng/ml
Hydrocodone	3.060	35353	∞	38.42	475.4	48779	45.163 ng/ml
Ketamine	4.077	161804	83482.8	38.80	9068.5	148142	53.841 ng/ml
Lamotrigine	4.321	15973	24957.8	98.09	74984.0	69230	53.473 ng/ml
Meprobamate	4.903	19617	3797.0	43.80	1732.9	15843	49.498 ng/ml
Methadone	5.670	355330	17327.6	64.43	169613.7	343153	49.974 ng/ml
Methamphetamine	3.232	406151	54379.9	38.09	16715.4	224473	55.075 ng/ml
Morphine	1.267	10332	1938.0	20.07	704.8	2979	50.034 ng/ml
Norbuprenorphine	5.022	2197	∞	104.44	10480.2	7161	4.980 ng/ml
Norfentanyl	4.093	12964	2434.3	29.35	12034.7	306581	4.912 ng/ml
O-Desmethylvenlafaxine	4.091	127617	1643.2	546.36	61743.2	8658	51.792 ng/ml
Trazodone	5.276	204995	∞	137.40	∞	242687	52.145 ng/ml
Venlafaxine	5.061	365370	197463.9	37.40	2357.6	378404	47.997 ng/ml

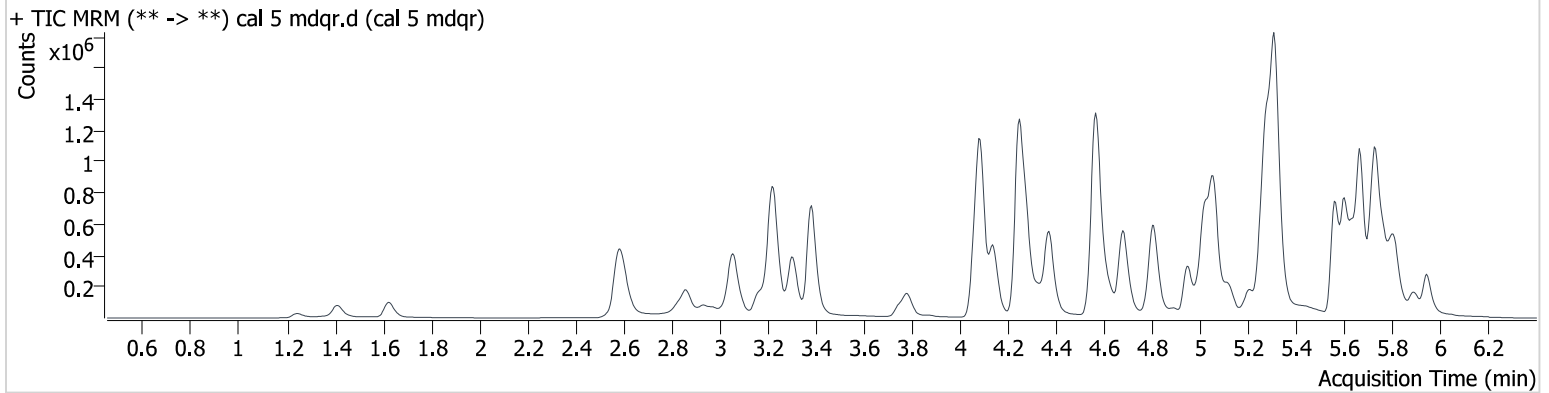
AM #28 Multi-Drug Quant. Results

Batch results D:\MassHunter\Data\2024\am 27-28\042424\QuantResults\am 28.batch.bin
Calibration Last Update 4/25/2024 11:02:08 AM

Instrument 69679
Type Cal
Acq. Method mdqp1 121523.m
Sample Position P2-E5
Injection Volume 2
Acq. Date-Time 4/24/2024 2:12:13 PM
Sample Info.

Data File cal 5 mdqr.d
Sample cal 5 mdqr
Operator Anne Nord
Comment Only drugs and concentrations listed on the laboratory report itself are appropriate to be used for interpretation purposes. Any drugs or values in the notes but not included on the report are used by laboratory personnel to make determinations/reach conclusions within the confines of the methods.

Sample Chromatogram



Name	RT	Resp.	S/N	Ratio	S/N	ISTD Resp.	Final Conc.
7-aminoclonazepam	4.253	37629	∞	119.84	12642.9	42076	86.191 ng/ml
Amphetamine	3.058	271652	19557.4	264.07	39833.7	111236	218.446 ng/ml
Bromazolam	5.809	131478	∞	94.18	1314.5	51344	104.239 ng/ml
Buprenorphine	5.947	43588	1613.9	15.16	637.5	61992	10.766 ng/ml
Carisoprodol	5.714	215525	∞	63.49	3901.2	79044	109.476 ng/ml
Citalopram	5.251	594125	1436623.4	39.20	∞	253192	101.142 ng/ml
Clonazepam	5.607	55123	133423.0	34.25	∞	9490	101.436 ng/ml
Dextromethorphan	5.289	374759	1100146.5	76.80	29674.2	200111	95.997 ng/ml
Diphenhydramine	5.316	673051	122228.8	313.92	137277.0	949624	96.927 ng/ml
Doxylamine	4.566	1838165	∞	95.97	207450.3	566879	102.390 ng/ml
EDDP	5.279	602987	43359.4	43.32	1480011.2	292589	100.737 ng/ml
Fentanyl	5.132	80658	30948.8	131.91	12939.9	335517	9.883 ng/ml
Fluorofentanyl	5.188	74689	107963.7	113.09	997.2	4346	10.169 ng/ml
Fluoxetine	5.722	708717	1136617.4	6.55	150442.2	272669	101.938 ng/ml
Hydrocodone	3.050	197611	∞	40.55	∞	111465	109.317 ng/ml
Ketamine	4.072	388948	68532.2	39.63	55287.3	195583	98.730 ng/ml
Lamotrigine	4.321	35799	265366.7	100.32	72899.0	79044	104.863 ng/ml
Meprobamate	4.898	57912	19342.6	50.94	5093.9	23406	99.157 ng/ml
Methadone	5.670	988958	4159525.9	63.28	20694.6	469043	101.244 ng/ml
Methamphetamine	3.227	1050629	64643.8	37.61	11162.1	332766	99.027 ng/ml
Morphine	1.246	27723	2244.5	19.42	776.6	4082	98.101 ng/ml
Norbuprenorphine	5.012	5588	11342.6	97.66	5169.2	9468	10.762 ng/ml
Norfentanyl	4.093	31844	2796.9	29.13	∞	362290	10.167 ng/ml
O-Desmethylvenlafaxine	4.086	332144	3376.8	543.59	72836.5	12066	96.969 ng/ml
Trazodone	5.276	509555	57811.4	136.53	18383.9	370004	85.396 ng/ml
Venlafaxine	5.061	1035538	672070.8	36.89	5660.3	518609	98.527 ng/ml

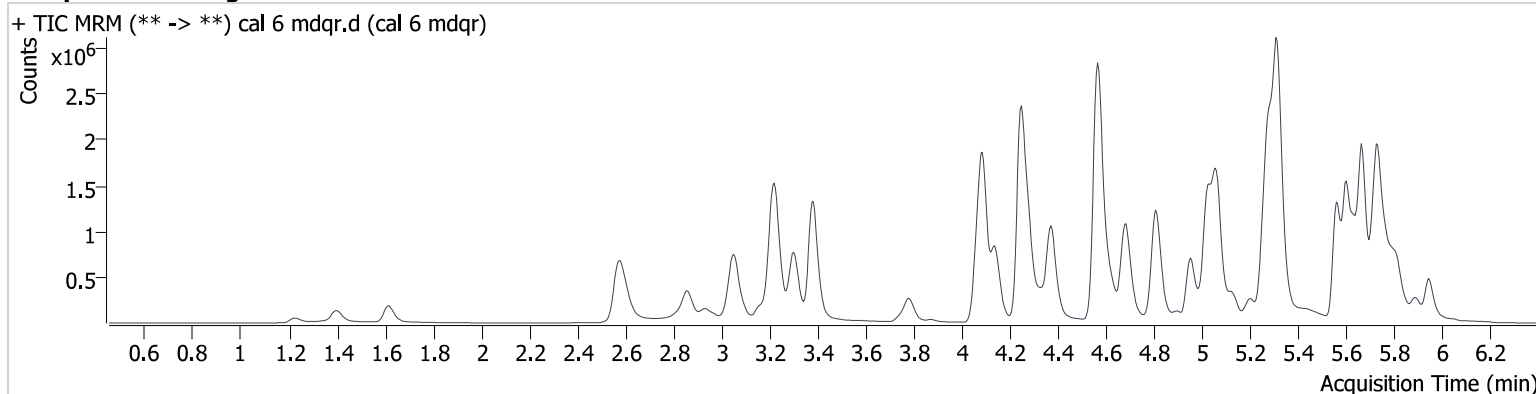
AM #28 Multi-Drug Quant. Results

Batch results D:\MassHunter\Data\2024\am 27-28\042424\QuantResults\am 28.batch.bin
Calibration Last Update 4/25/2024 11:02:08 AM

Instrument 69679
Type Cal
Acq. Method mdqp1 121523.m
Sample Position P2-F5
Injection Volume 2
Acq. Date-Time 4/24/2024 2:20:56 PM
Sample Info.

Data File cal 6 mdqr.d
Sample cal 6 mdqr
Operator Anne Nord
Comment Only drugs and concentrations listed on the laboratory report itself are appropriate to be used for interpretation purposes. Any drugs or values in the notes but not included on the report are used by laboratory personnel to make determinations/reach conclusions within the confines of the methods.

Sample Chromatogram



Name	RT	Resp.	S/N	Ratio	S/N	ISTD Resp.	Final Conc.
7-aminoclonazepam	4.253	60401	3858.8	112.86	13815.5	33213	176.260 ng/ml
Amphetamine	3.053	508651	47063.0	259.10	13946.4	105275	433.532 ng/ml
Bromazolam	5.809	212364	2723.5	94.72	668.1	36744	235.786 ng/ml
Buprenorphine	5.947	104524	3861.6	14.84	1007.4	63901	25.212 ng/ml
Carisoprodol	5.714	365620	∞	64.16	∞	58486	251.918 ng/ml
Citalopram	5.251	1142162	180219.9	39.47	1217875.1	196186	251.092 ng/ml
Clonazepam	5.607	94328	39178.6	34.39	166182.9	6298	262.727 ng/ml
Dextromethorphan	5.295	731052	1164594.1	75.72	15845547.7	149560	250.322 ng/ml
Diphenhydramine	5.316	1323544	927056.6	314.92	932367.2	699501	258.479 ng/ml
Doxylamine	4.566	4220269	288770.9	96.04	∞	532438	250.897 ng/ml
EDDP	5.284	1325911	∞	43.89	104755.6	262682	246.687 ng/ml
Fentanyl	5.132	192415	55242.0	133.59	10607.8	315003	25.068 ng/ml
Fluorofentanyl	5.193	175397	674.3	119.91	1222.4	4169	24.839 ng/ml
Fluoxetine	5.717	1331052	37592.0	6.43	∞	207073	252.538 ng/ml
Hydrocodone	3.045	418238	∞	44.33	∞	101214	253.734 ng/ml
Ketamine	4.067	721994	98408.6	38.44	39537.9	167748	214.669 ng/ml
Lamotrigine	4.321	59754	∞	97.53	6501.1	58486	236.421 ng/ml
Meprobamate	4.903	136450	29374.4	47.47	4201.3	20886	262.217 ng/ml
Methadone	5.664	2120118	327300.9	62.26	108699.3	408508	248.486 ng/ml
Methamphetamine	3.222	2214957	134249.3	37.51	8987167.6	318058	223.154 ng/ml
Morphine	1.226	61872	10619.5	19.61	1012.0	3406	262.697 ng/ml
Norbuprenorphine	5.017	10916	∞	103.72	14276.5	7971	26.657 ng/ml
Norfentanyl	4.098	53954	4397.1	28.83	129994.8	247242	25.181 ng/ml
O-Desmethylvenlafaxine	4.086	635029	15142.9	538.01	72368.6	9045	247.739 ng/ml
Trazodone	5.276	911270	262555.5	138.30	59118.1	353579	160.339 ng/ml
Venlafaxine	5.066	2303308	20590.3	35.94	8930.7	450386	251.279 ng/ml

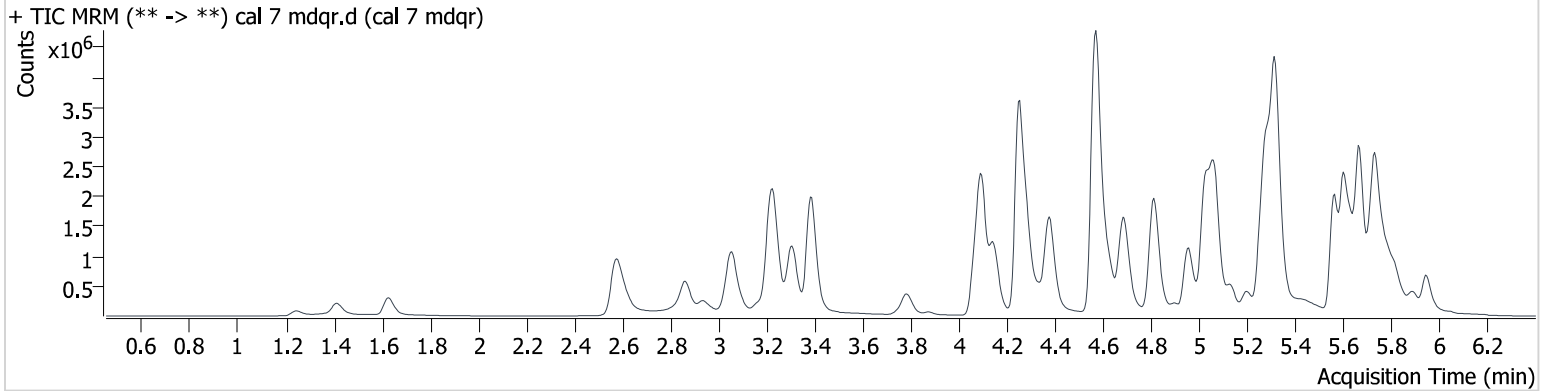
AM #28 Multi-Drug Quant. Results

Batch results D:\MassHunter\Data\2024\am 27-28\042424\QuantResults\am 28.batch.bin
Calibration Last Update 4/25/2024 11:02:08 AM

Instrument 69679
Type Cal
Acq. Method mdqp1 121523.m
Sample Position P2-G5
Injection Volume 2
Acq. Date-Time 4/24/2024 2:29:38 PM
Sample Info.

Data File cal 7 mdqr.d
Sample cal 7 mdqr
Operator Anne Nord
Comment Only drugs and concentrations listed on the laboratory report itself are appropriate to be used for interpretation purposes. Any drugs or values in the notes but not included on the report are used by laboratory personnel to make determinations/reach conclusions within the confines of the methods.

Sample Chromatogram



Name	RT	Resp.	S/N	Ratio	S/N	ISTD Resp.	Final Conc.
7-aminoclonazepam	4.258	80466	262354.2	109.05	22700.4	23313	335.398 ng/ml
Amphetamine	3.058	748527	79152.9	257.94	233135.6	92222	729.221 ng/ml
Bromazolam	5.809	278059	1762.3	97.35	∞	23504	483.058 ng/ml
Buprenorphine	5.947	185901	2915.6	15.31	1748.0	60423	47.534 ng/ml
Carisoprodol	5.709	471554	1213885.8	62.35	14775.0	42495	447.716 ng/ml
Citalopram	5.256	1672030	∞	39.75	120732.3	147861	487.812 ng/ml
Clonazepam	5.612	126275	32783.6	33.63	126592.8	4166	532.565 ng/ml
Dextromethorphan	5.295	1073119	∞	72.72	106642.4	109123	503.465 ng/ml
Diphenhydramine	5.321	2067029	180561.0	310.99	3220992.3	590370	478.154 ng/ml
Doxylamine	4.571	7354835	∞	97.27	1102861.8	498496	467.384 ng/ml
EDDP	5.284	2220796	∞	44.31	∞	215883	502.720 ng/ml
Fentanyl	5.137	363490	13675.5	136.15	19387.6	304366	48.983 ng/ml
Fluorofentanyl	5.193	340043	4231.4	117.27	7766.0	4140	48.451 ng/ml
Fluoxetine	5.717	1863819	∞	6.71	368302.8	152512	480.393 ng/ml
Hydrocodone	3.050	789014	3894.5	41.86	∞	94528	511.714 ng/ml
Ketamine	4.067	1004483	102837.5	39.18	65621.9	136017	368.943 ng/ml
Lamotrigine	4.326	82391	8908.8	95.73	∞	42495	448.556 ng/ml
Meprobamate	4.903	222763	44997.2	48.94	25668.4	19165	466.708 ng/ml
Methadone	5.670	3545664	230079.2	60.31	361447.4	336024	504.695 ng/ml
Methamphetamine	3.227	3307929	∞	38.70	47539.1	297825	358.245 ng/ml
Morphine	1.246	106059	11283.7	19.53	3409.8	2966	517.176 ng/ml
Norbuprenorphine	5.017	16490	44880.1	101.01	80467.7	6825	48.008 ng/ml
Norfentanyl	4.103	69746	18305.8	28.54	∞	159355	50.463 ng/ml
O-Desmethylvenlafaxine	4.096	886546	2236.4	537.37	102189.3	6589	475.055 ng/ml
Trazodone	5.276	1190423	96749.9	137.45	∞	341979	216.772 ng/ml
Venlafaxine	5.066	3894859	367102.5	35.37	82717.1	370309	516.070 ng/ml

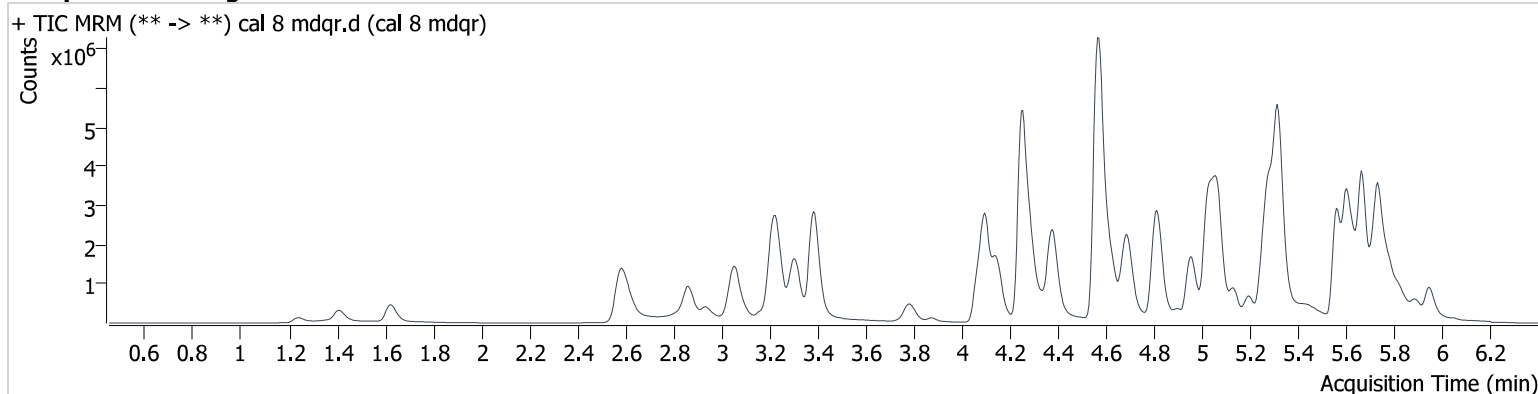
AM #28 Multi-Drug Quant. Results

Batch results D:\MassHunter\Data\2024\am 27-28\042424\QuantResults\am 28.batch.bin
Calibration Last Update 4/25/2024 11:02:08 AM

Instrument 69679
Type Cal
Acq. Method mdqp1 121523.m
Sample Position P2-H5
Injection Volume 2
Acq. Date-Time 4/24/2024 2:47:00 PM
Sample Info.

Data File cal 8 mdqr.d
Sample cal 8 mdqr
Operator Anne Nord
Comment Only drugs and concentrations listed on the laboratory report itself are appropriate to be used for interpretation purposes. Any drugs or values in the notes but not included on the report are used by laboratory personnel to make determinations/reach conclusions within the confines of the methods.

Sample Chromatogram



Name	RT	Resp.	S/N	Ratio	S/N	ISTD Resp.	Final Conc.
7-aminoclonazepam	4.263	110804	5103.2	111.93	2422.9	13828	779.933 ng/ml
Amphetamine	3.064	983096	56906.1	255.29	121479.3	82629	1069.563 ng/ml
Bromazolam	5.804	365900	∞	95.06	1420.2	15691	952.591 ng/ml
Buprenorphine	5.947	299686	4875.5	15.12	2142.8	54768	84.638 ng/ml
Carisoprodol	5.709	559271	∞	63.82	32440.5	27541	819.926 ng/ml
Citalopram	5.251	2216804	12079224.6	41.14	∞	100819	948.617 ng/ml
Clonazepam	5.607	142105	505683.9	32.53	92464.0	3129	798.351 ng/ml
Dextromethorphan	5.295	1262605	85396.6	78.59	∞	64358	1004.242 ng/ml
Diphenhydramine	5.321	2626262	∞	343.01	314539.1	352182	1018.203 ng/ml
Doxylamine	4.570	11789832	443979.1	97.54	366290.0	432711	863.481 ng/ml
EDDP	5.284	3385976	∞	44.17	∞	164475	1006.020 ng/ml
Fentanyl	5.132	679938	97669.2	138.45	32692.4	283882	98.210 ng/ml
Fluorofentanyl	5.193	636926	3927.2	114.11	432401.1	3659	102.649 ng/ml
Fluoxetine	5.717	2325372	29580.0	6.78	435583.4	101196	903.547 ng/ml
Hydrocodone	3.045	1350311	3370.1	38.83	∞	86674	954.403 ng/ml
Ketamine	4.062	1194332	95639.1	38.46	48461.1	103147	578.951 ng/ml
Lamotrigine	4.321	119839	10717.0	95.88	179564.4	27541	1006.583 ng/ml
Meprobamate	4.903	391618	49454.1	44.51	147509.9	16701	941.796 ng/ml
Methadone	5.664	5332611	∞	58.55	179399.4	247913	1028.314 ng/ml
Methamphetamine	3.227	4899438	1624000.0	36.30	∞	283809	558.984 ng/ml
Morphine	1.241	175649	14402.8	19.33	1737.8	2718	934.922 ng/ml
Norbuprenorphine	5.012	21824	29733.5	97.63	38801.1	4766	92.111 ng/ml
Norfentanyl	4.108	80197	8142.3	27.69	97799.6	90019	102.675 ng/ml
O-Desmethylvenlafaxine	4.096	1102093	21800.2	504.47	237348.3	3774	1031.396 ng/ml
Trazodone	5.271	1419275	158547.0	111.61	210472.6	325323	271.831 ng/ml
Venlafaxine	5.066	5817404	232859.9	34.70	80553.9	265278	1075.250 ng/ml